

It's alive

**Evguenia Chevtchenko
Nicolas Demers-Stoddart
Michael Faciejew
Shelley Ludman
Sophie Wilkin**

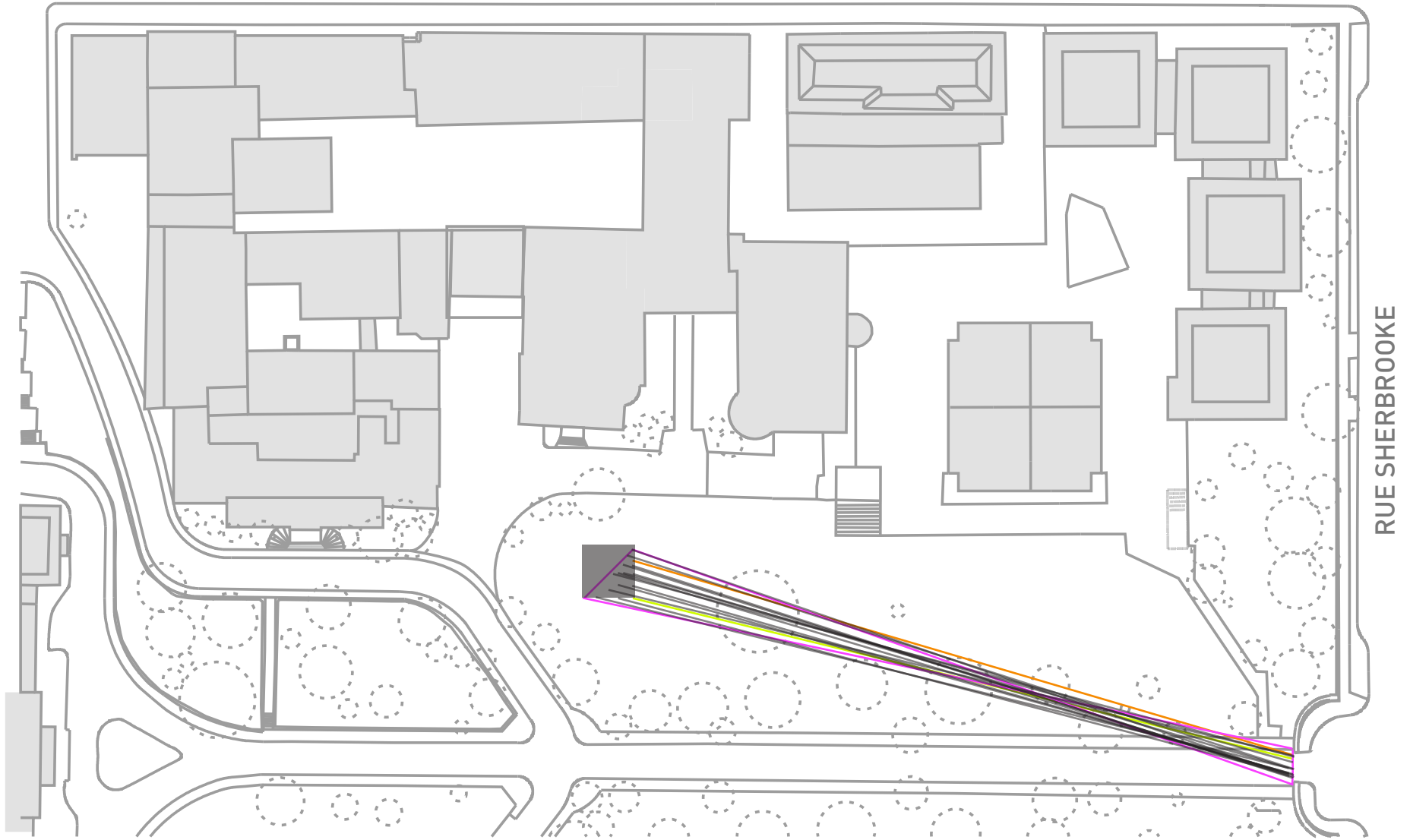
**McGill School of Architecture
Advanced Geometries - Research Pavillion
Brainstorming Session
5-Oct-2010**

Keywords

Moire effect - parallax -
visual and physical
playfulness - motion -
scale - overlapping



RUE UNIVERSITY



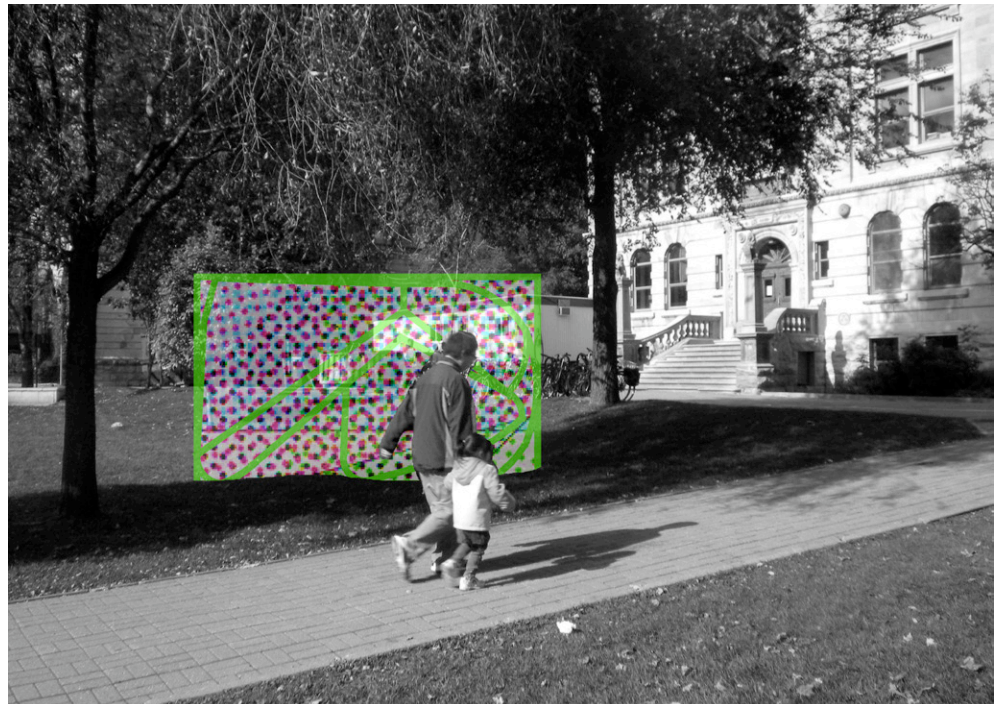
RUE SHERBROOKE

Site

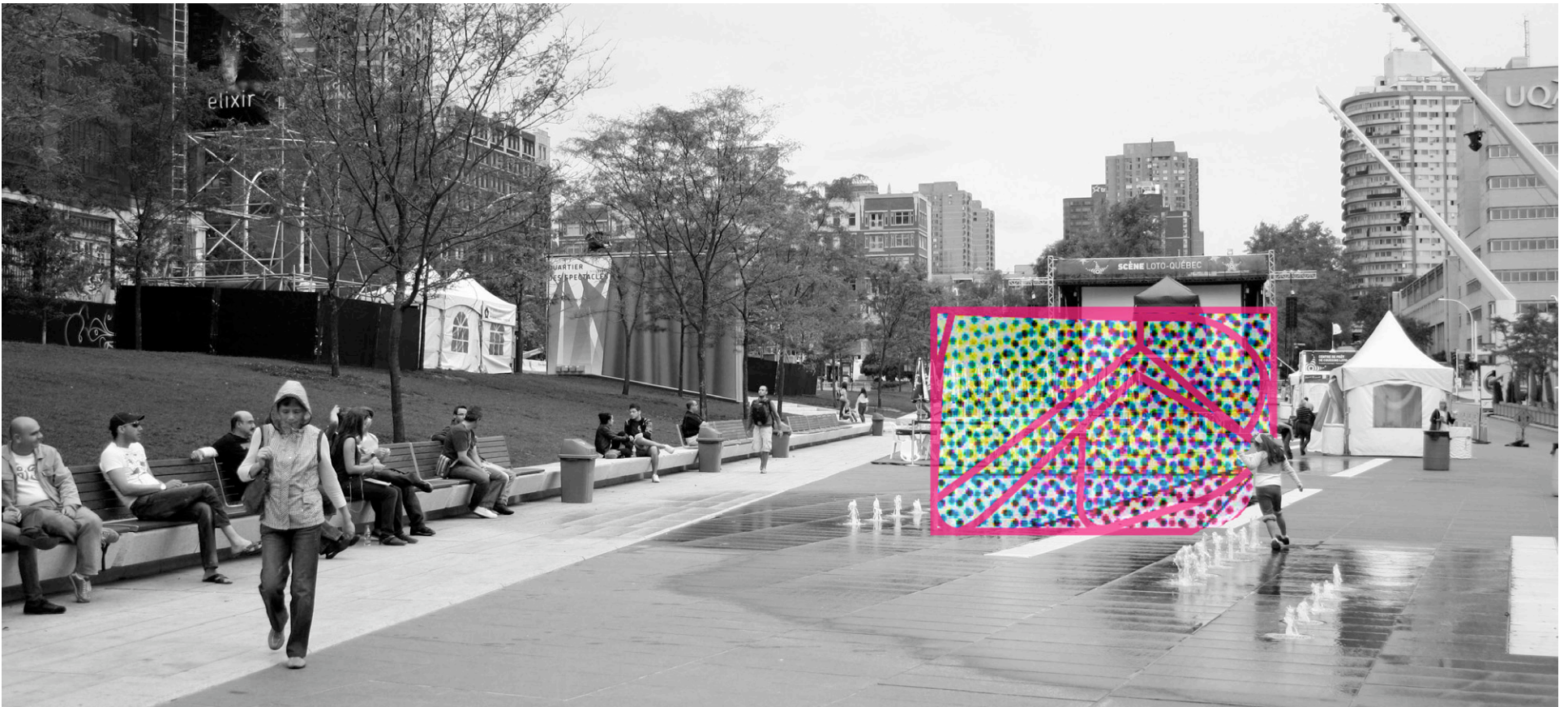
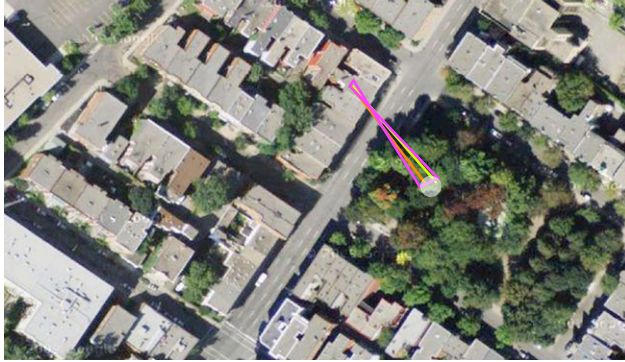
view from the McGill University Roddick Gates



view towards McGill School of Architecture
Macdonald-Harrington Building



Transposition



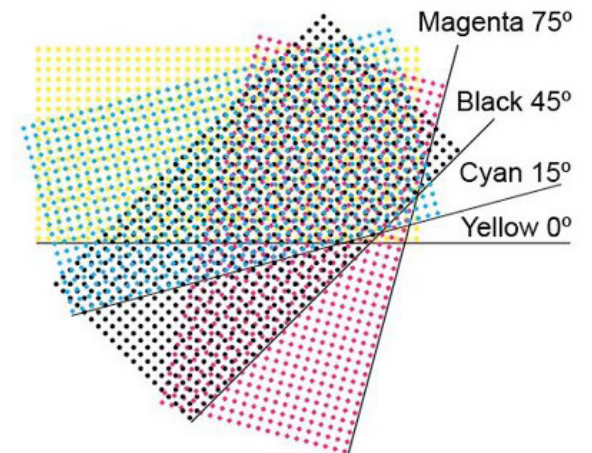
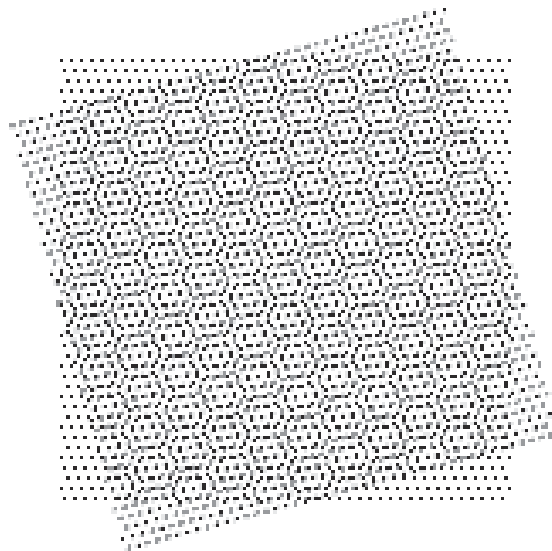
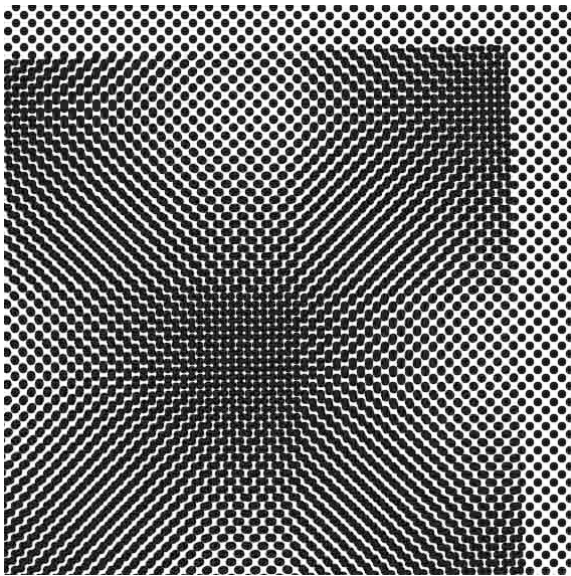
Interference Patterns

Parallax

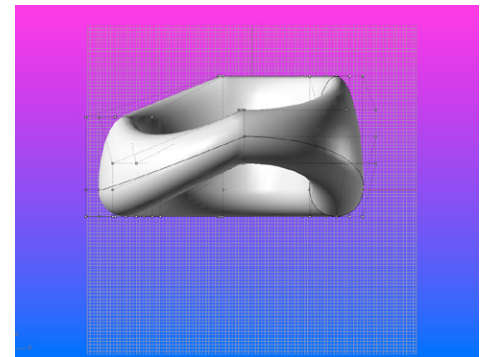
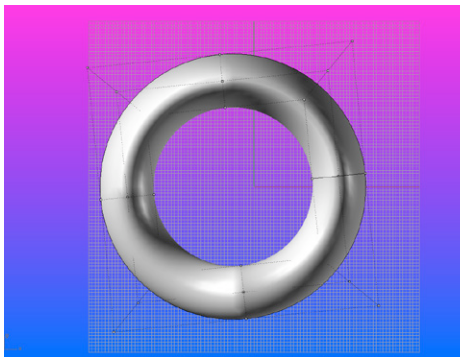
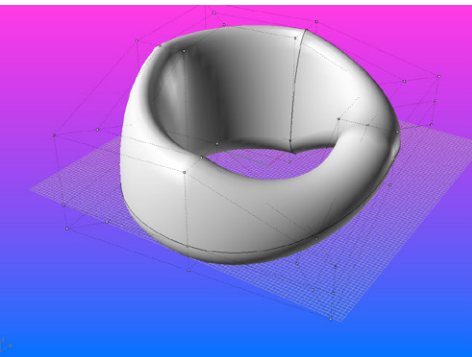
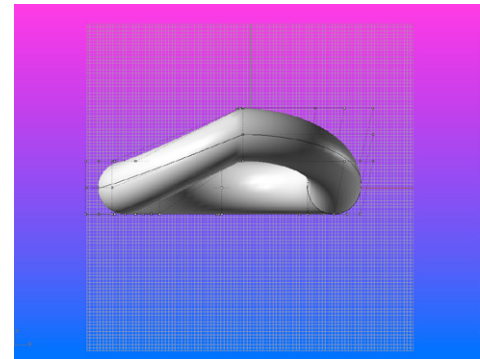
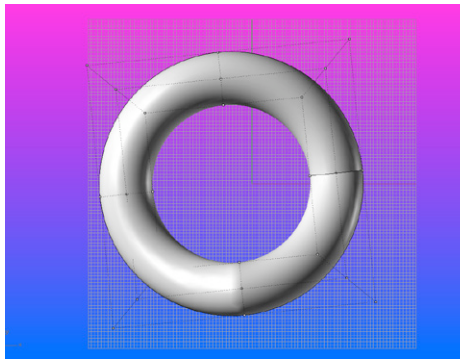
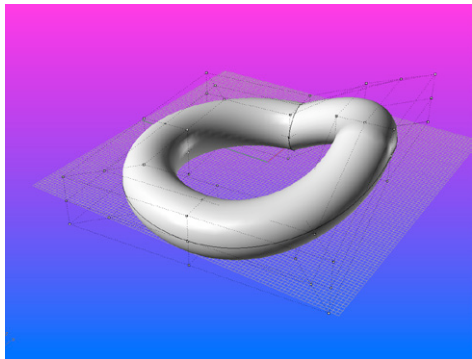
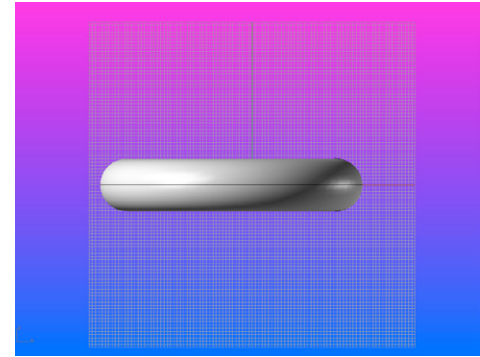
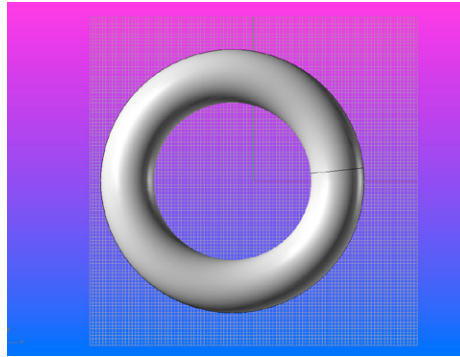
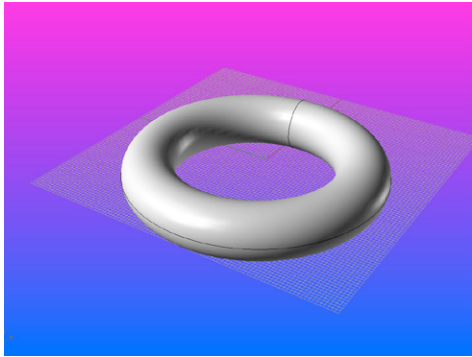
Parallax is “the effect whereby the position or direction of an object appears to differ when viewed from different positions.” The term is derived from Greek parallaxis meaning ‘a change’ or ‘an alteration’. The brain uses parallax to perceive depth and to estimate distances to the objects. It occurs due of the different views perceived simultaneously by the two eyes.

Moire Patterns

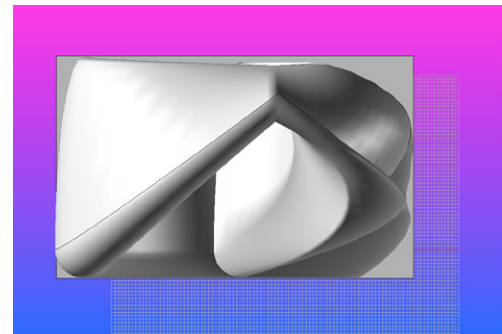
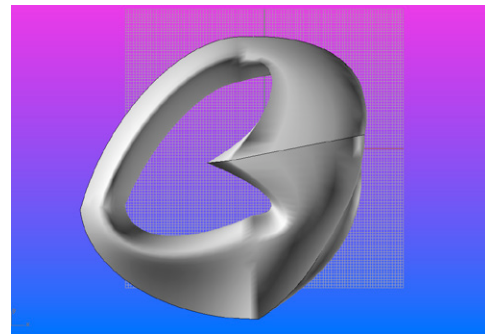
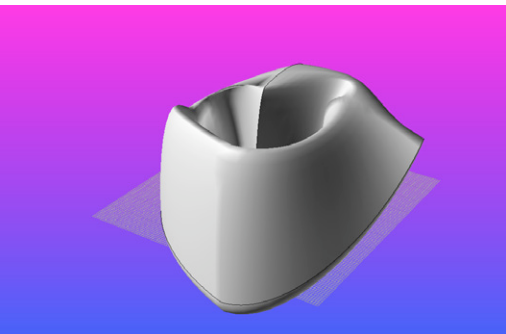
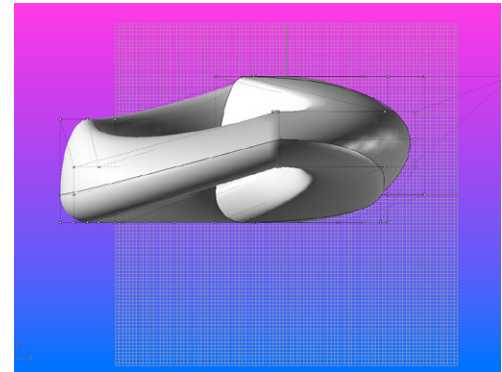
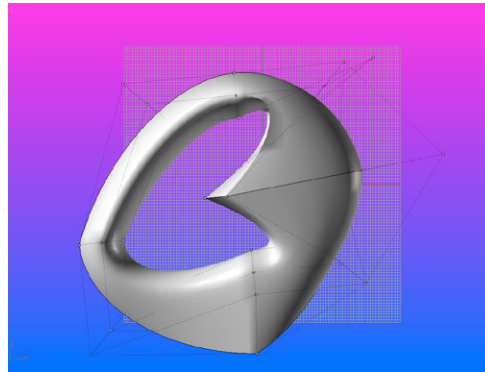
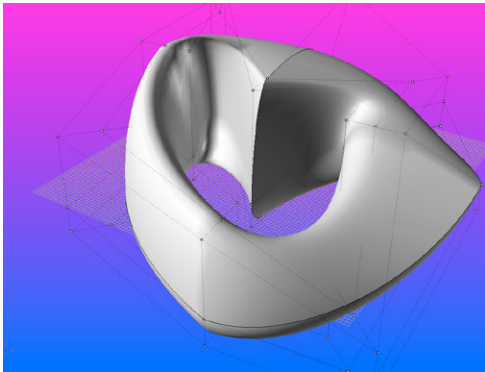
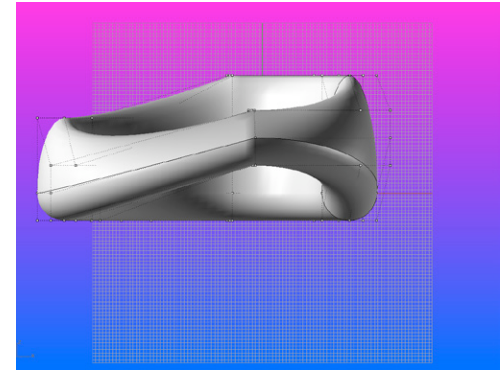
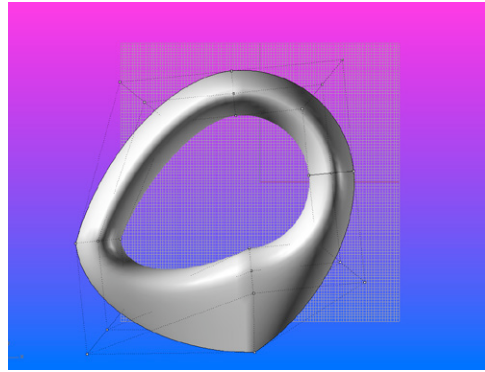
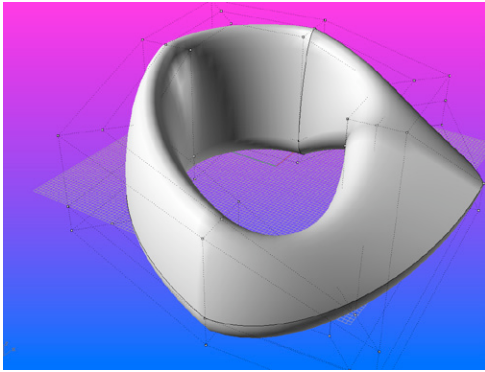
Moire patterns occur due to the interference of two similar grids overlapping each other. The resulting fringe patterns change with the translation of the grids while the visual interference is interpreted by the mind as a separate image.



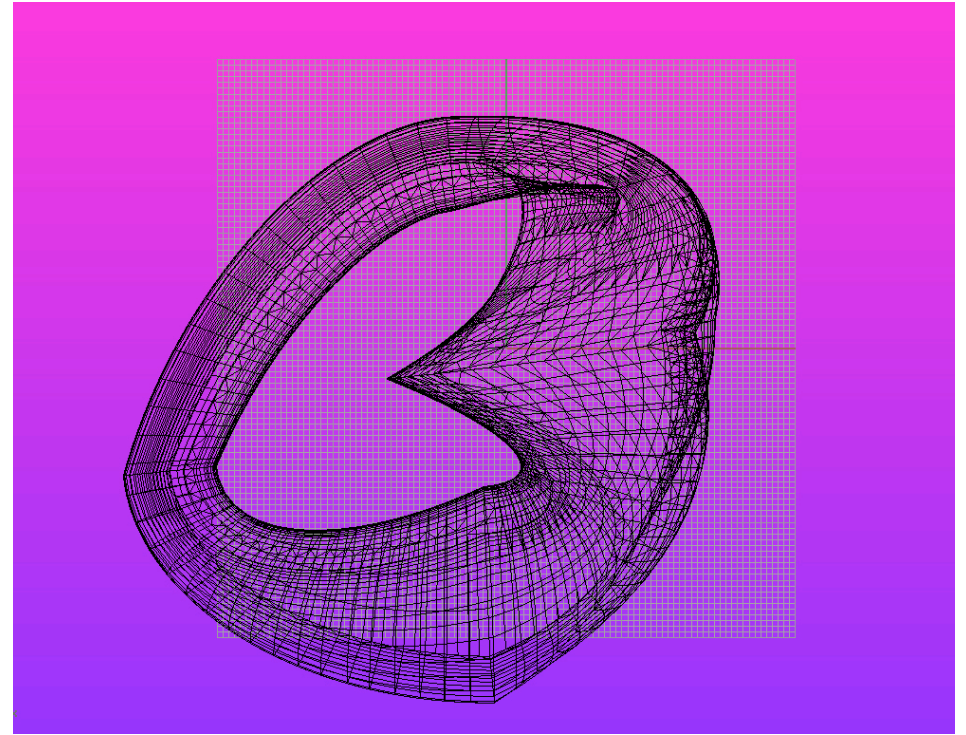
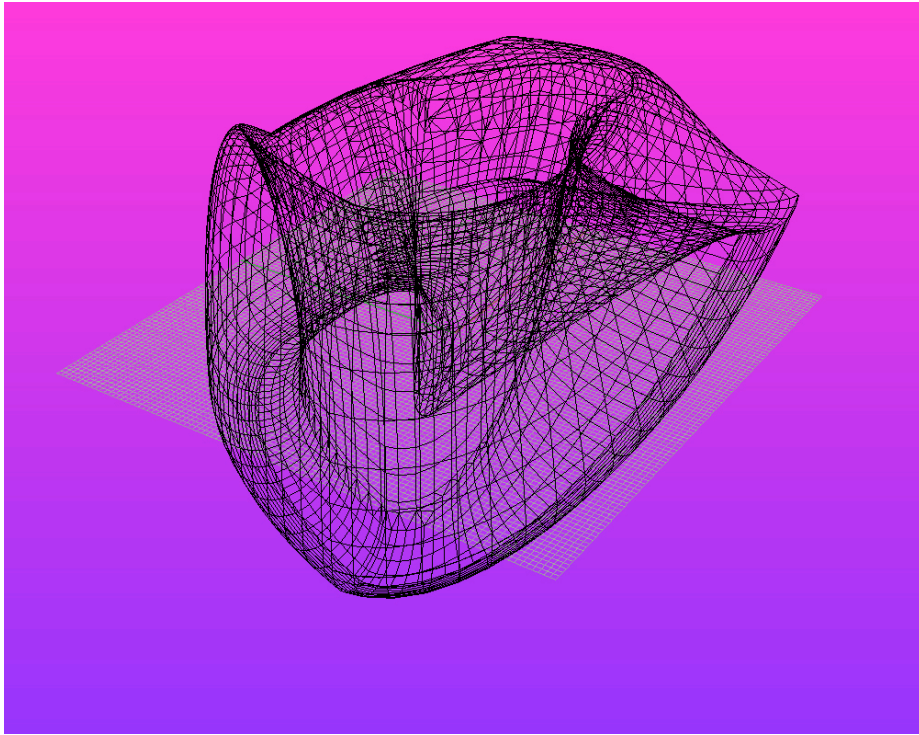
Torus as Basis



Torus as Basis



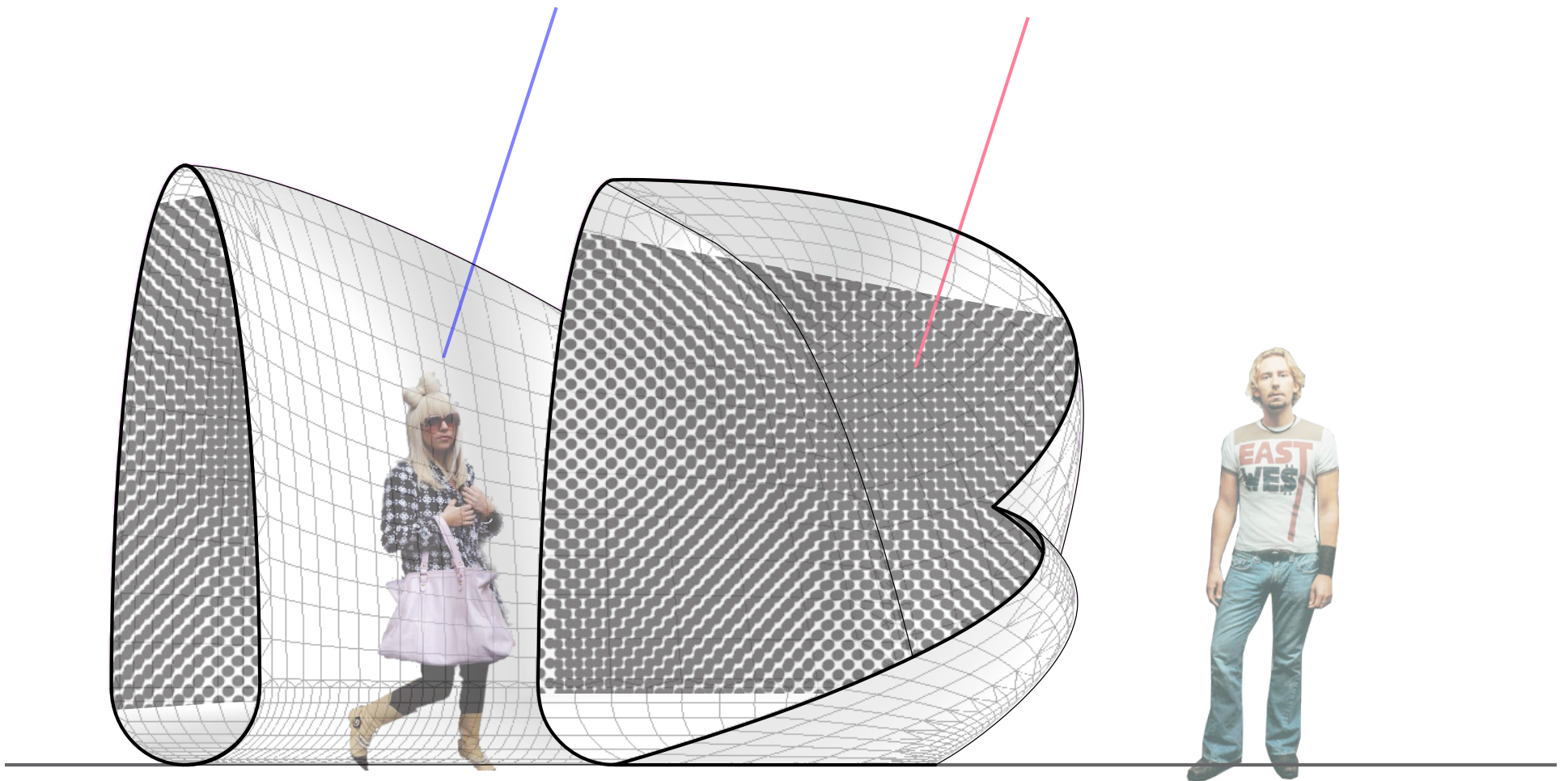
Interplay



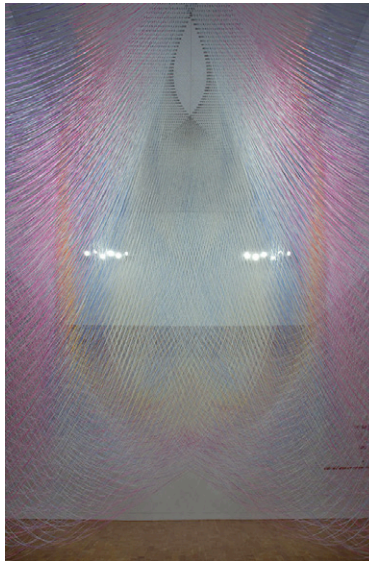
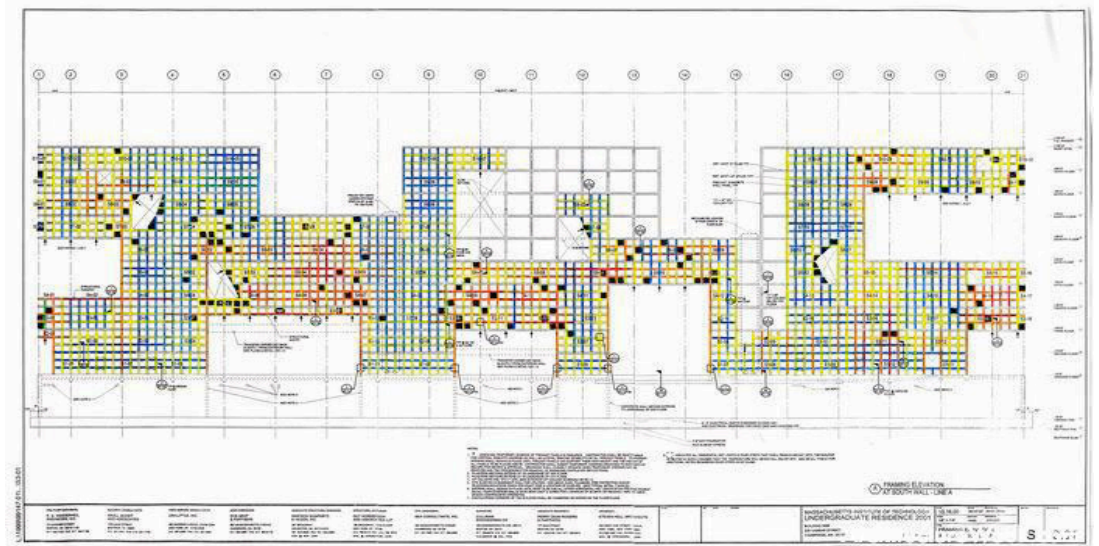
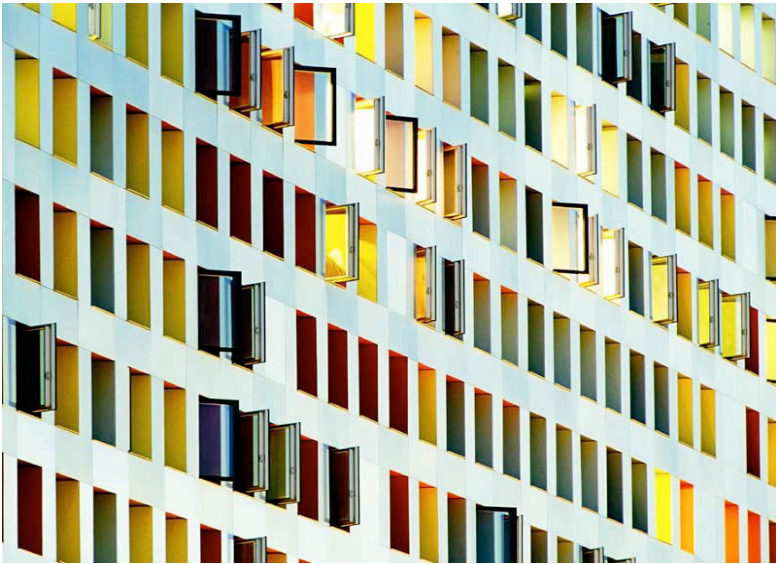
Sectional Interplay

Lady Gaga

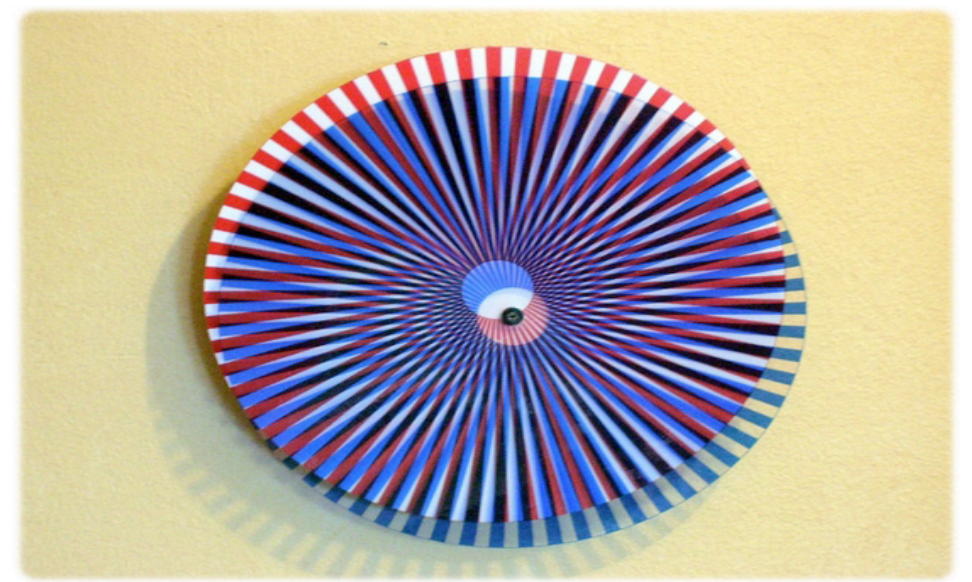
Crazy optical effect



Color as an Informative Layer



Case studies



**moti-
vate**