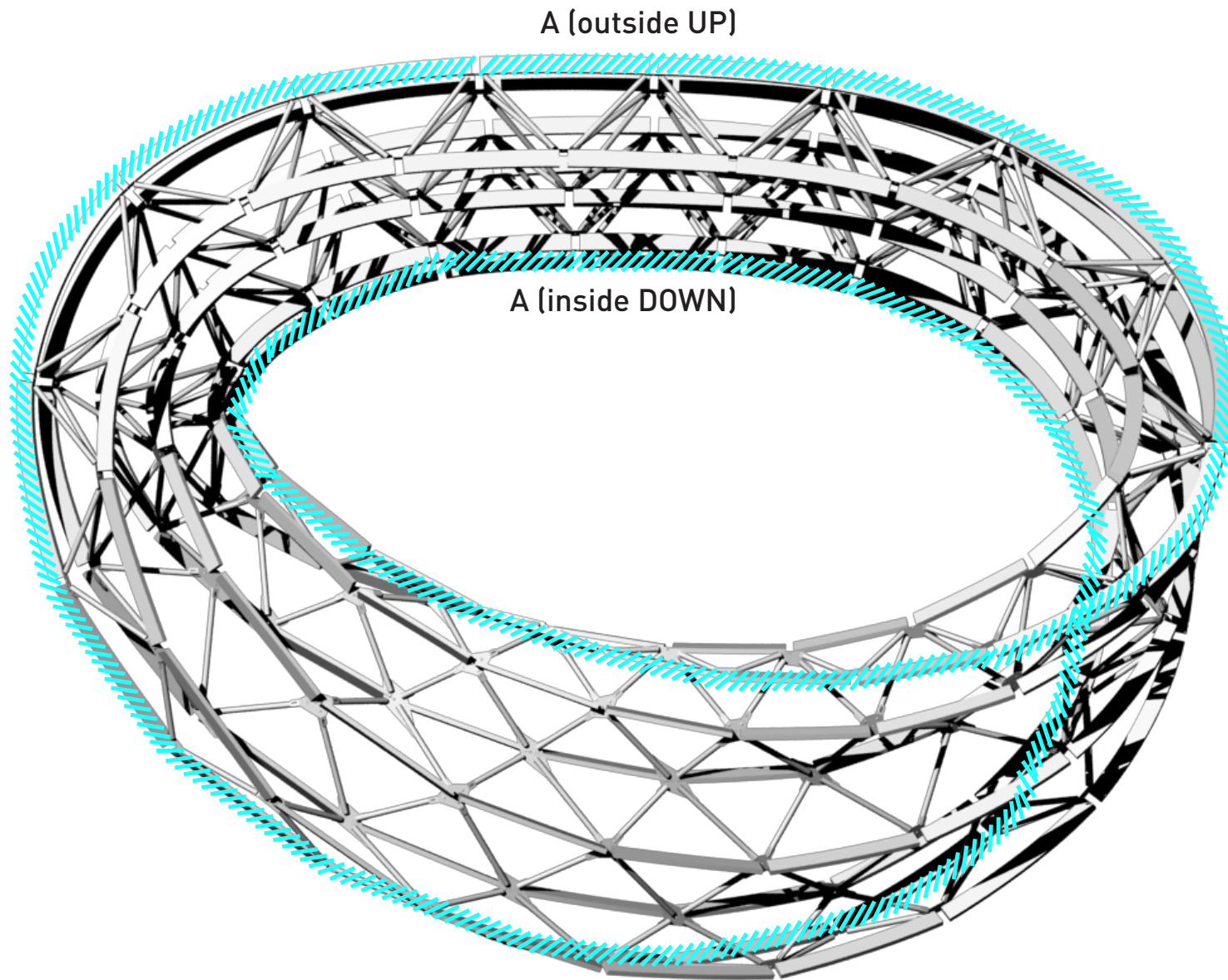


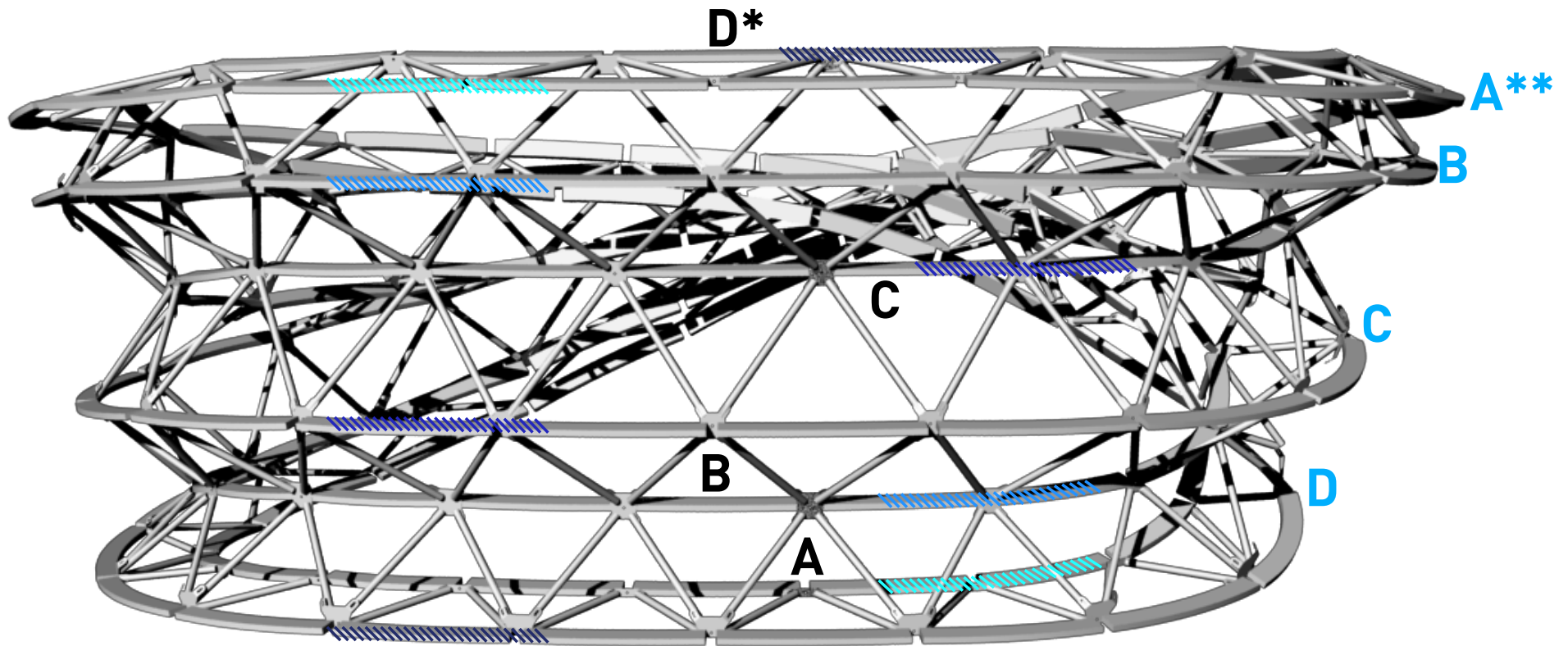
Construction methodology labeling protocol

February 21st 2011

Loops (ribs name)



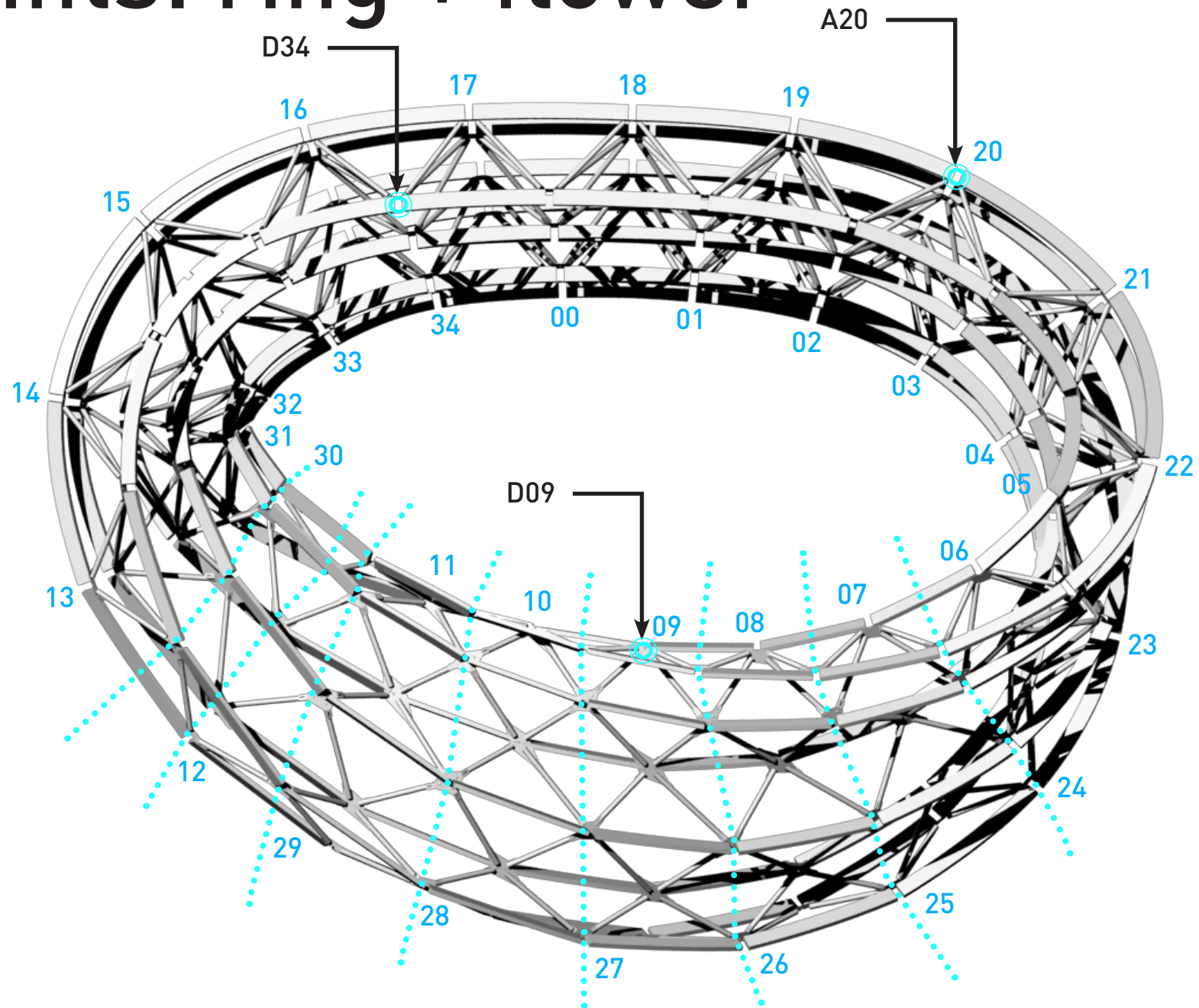
Ribs



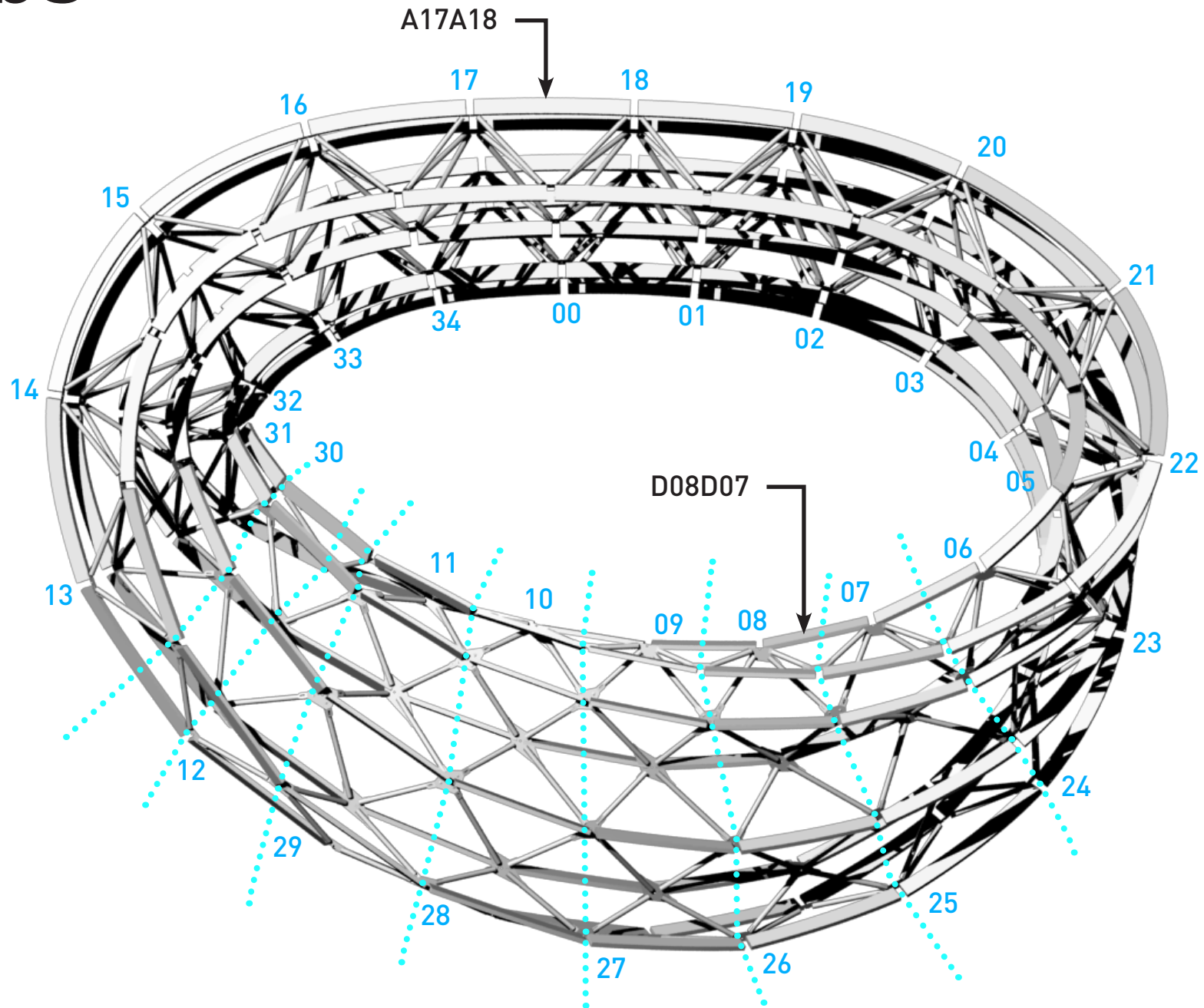
* Interior part of the overall pavilion Möbius strip

** Exterior part of the overall pavilion Möbius strip

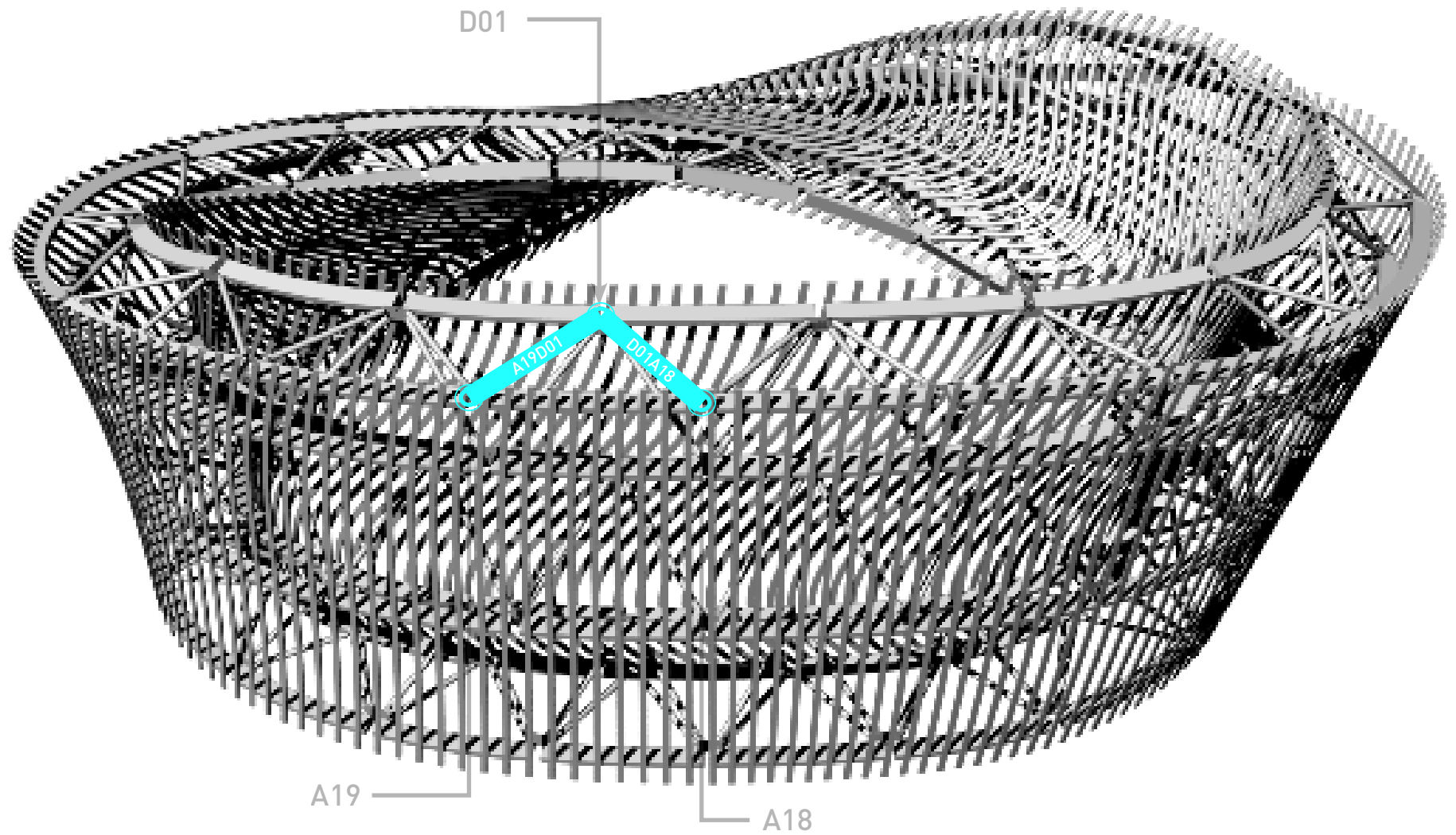
Joints: ring + flower



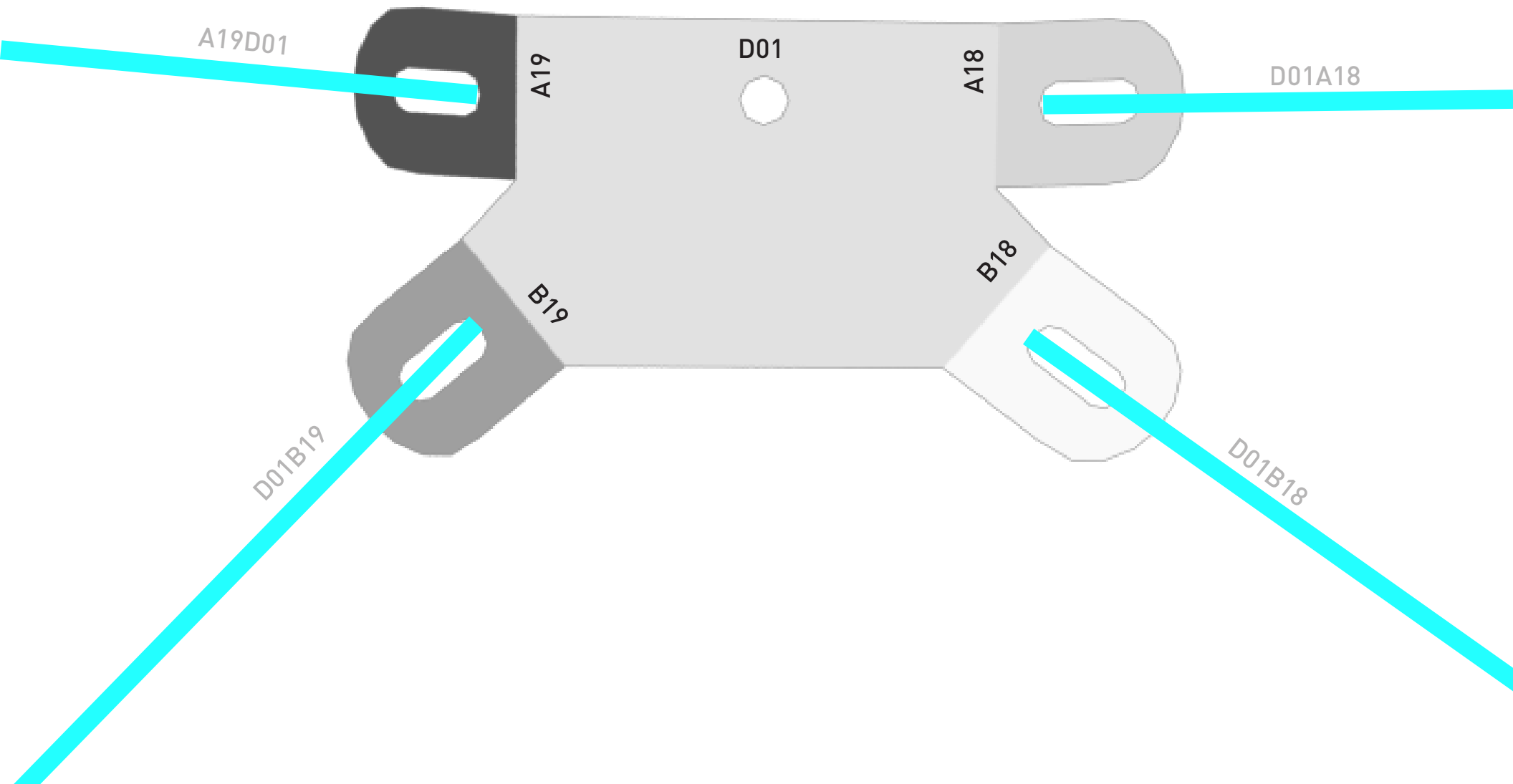
Ribs



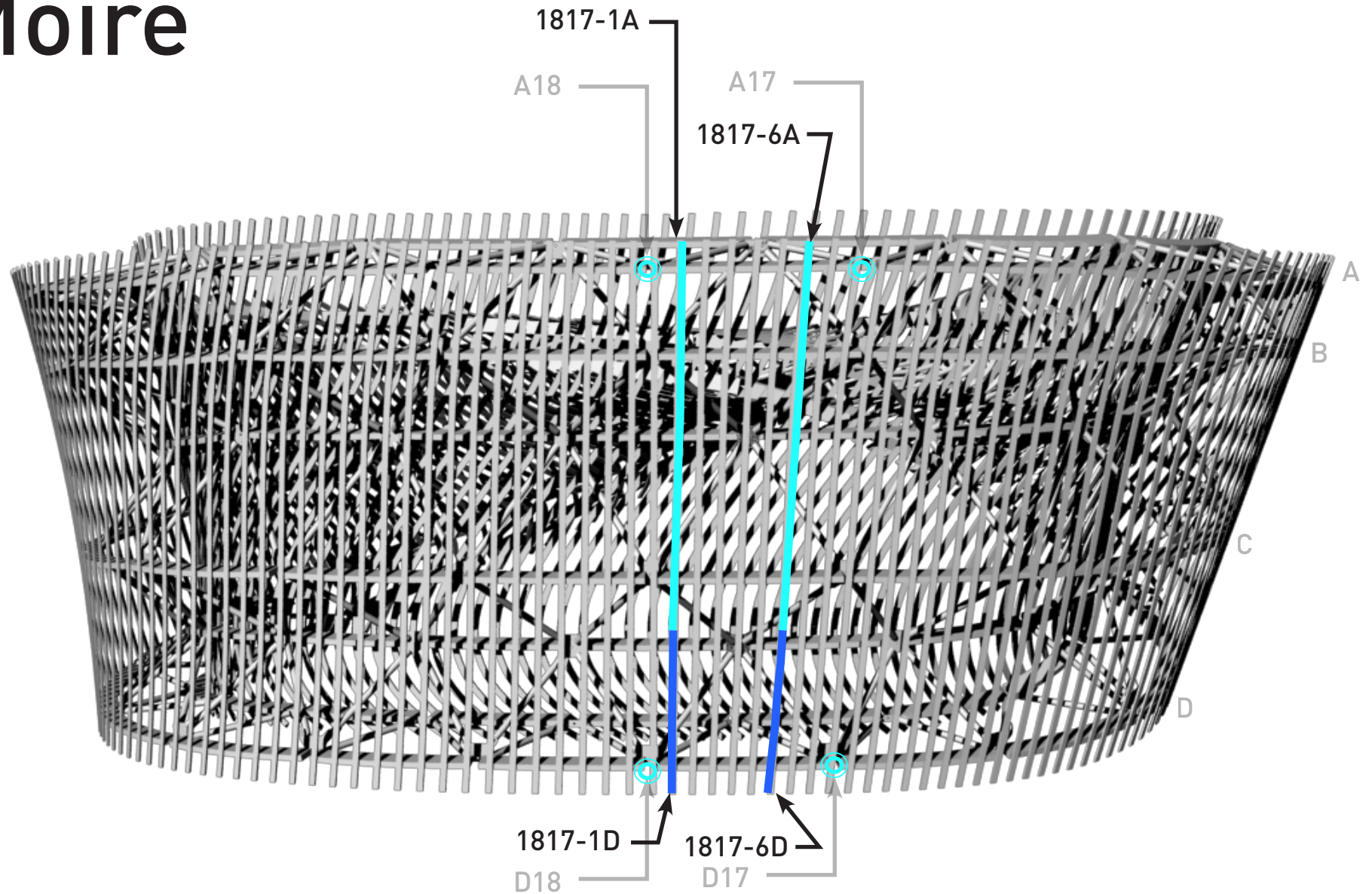
Tubes



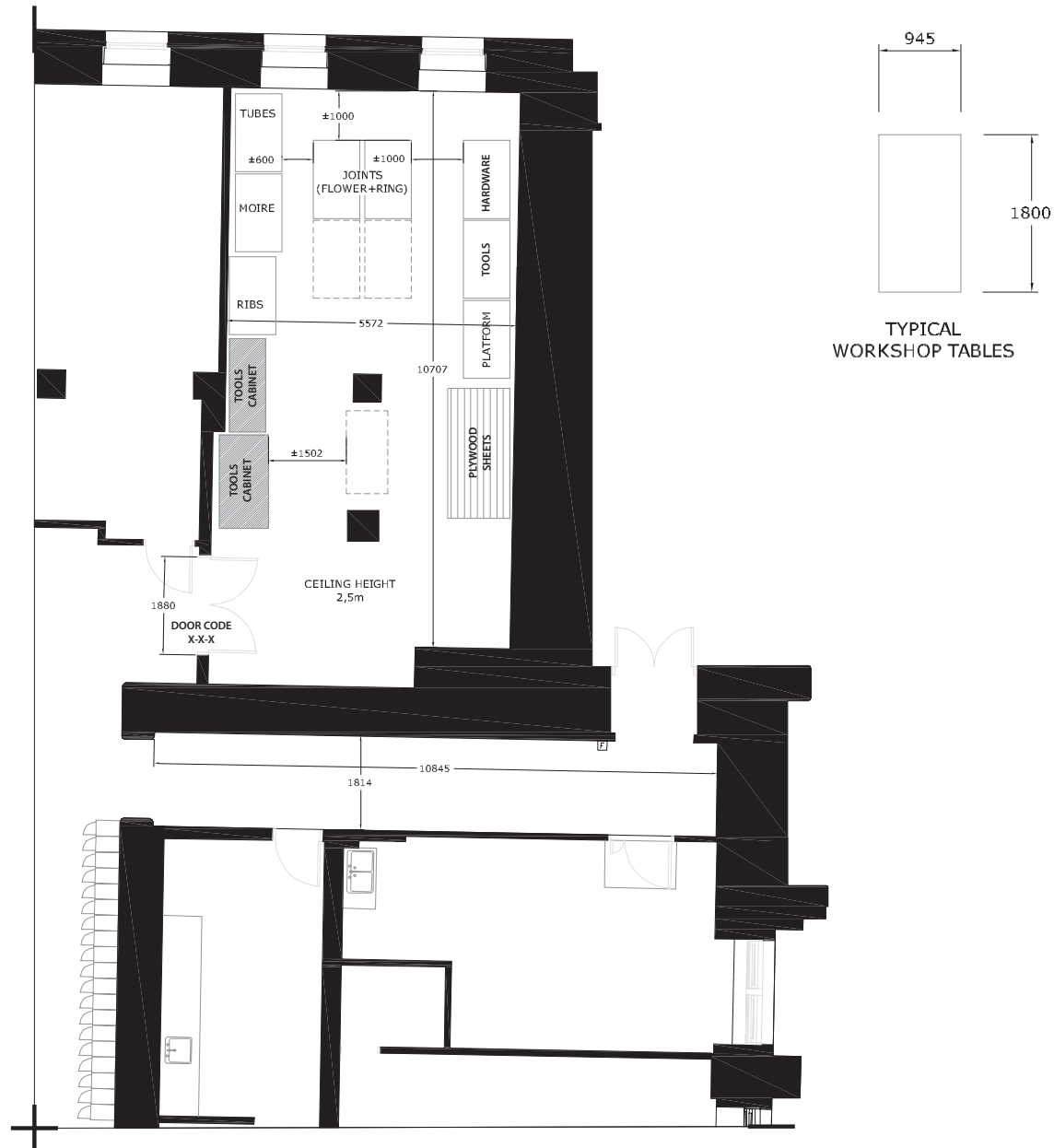
Flower joint



Moire



Workshop organization (draft)



Construction methodology (draft)

1. CNC (everyone 5-6 weeks)
2. Platform (3-4 persons)
3. Lamination of the ribs (4-5 persons)
4. “Sides” (sections 14-15 and 21-22) (3-4 persons)
 - a. Connection of ring joint to flower joint
 - b. Tubes
 - c. Ribs
5. Back “straight” part (sections 15 to 21)
6. “Twist” part (sections 14 to 22)
7. Connect all the sections (everyone)
8. Apply all the lattices (moire) (everyone)