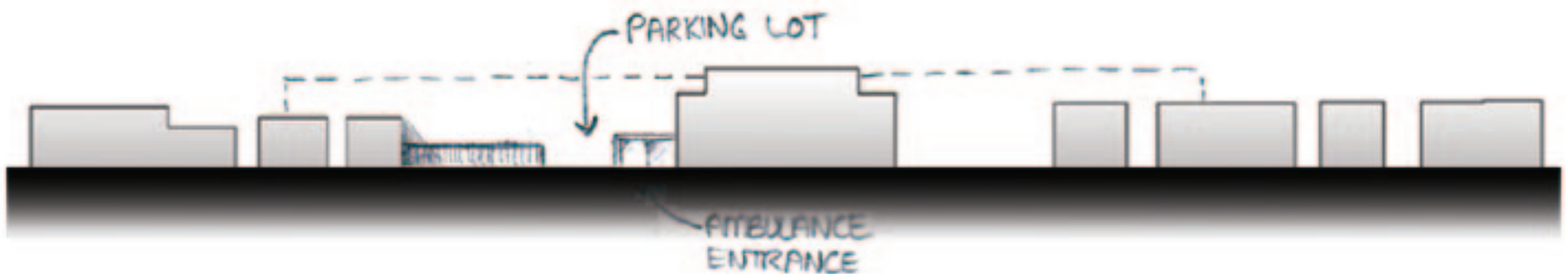


Reorganization should be a priority for the whole Walkley Avenue side of this hospital, but especially this strip of asphalt. There is no quick or easy solution to this awkward space, but it is plain to see that it is not functioning as it should be.

Specific zoning for parking spots could be clearer and limited to one portion of the paved lot leaving space for landscaping on Walkley Avenue.



SECTION THROUGH PARKING LOT