

Boulevard Study

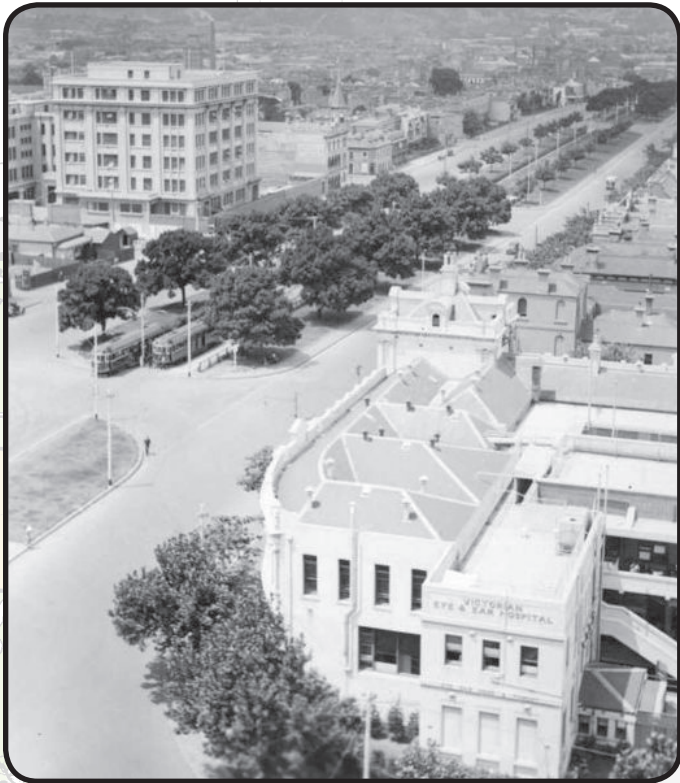
Victoria Parade, Melbourne, Australia



Victoria Parade is the major east-west thoroughfare connecting several central Melbourne neighbourhoods. Running seven kilometres with a reservation for light rail in the centre, it acquired its name for its former use as a parade ground.



Melbourne first introduced trams in 1885 and is now home to the world's most extensive tram system, with a total track length of 245 kilometres of track and over 1800 stops. Despite declining ridership in the 1970s, Melbourne retained and modernized their tram network while other many cities were removing theirs.



This very wide boulevard is framed primarily by two- or three-storey buildings, resulting in a height to width ratio at times as high as 1:8. Despite these proportions, its mature tree canopy overhanging both street and tracks breaks up this space, creating several distinct atmospheres.

