

CULTIVATING MEMBRANE
TK+IB



FORCES OF MOVEMENT

- > vehicular traffic
- main entrances
- pedestrian influx

- 1 city hall to independence hall green axis
- 2 secondary green axis
- 3 enter Mann auditorium
- 4 enter Habima theatre
- 5 enter Helena Rubenstein pavilion
- 6 residential access
- 7 secondary pedestrian/green axis
- 8 observation
- 9 commercial and public connection
- 10 cultural connection

GROUND FLOOR

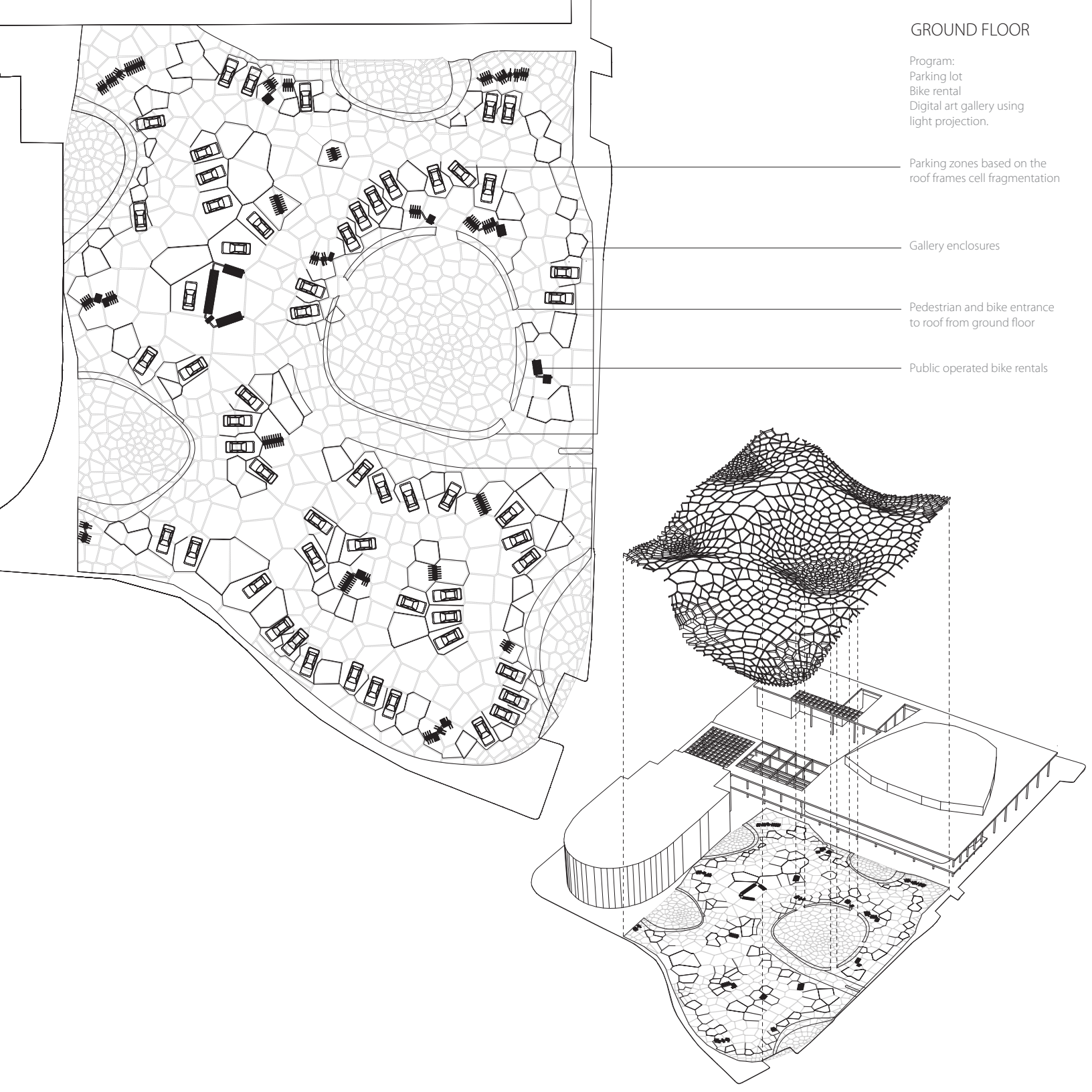
Program:
Parking lot
Bike rental
Digital art gallery using
light projection.

Parking zones based on the
roof frames cell fragmentation

Gallery enclosures

Pedestrian and bike entrance
to roof from ground floor

Public operated bike rentals



100 CONTEMPORARY TEL AVIV ARTISTS



Contemporary genetic art

Contemporary ecological art

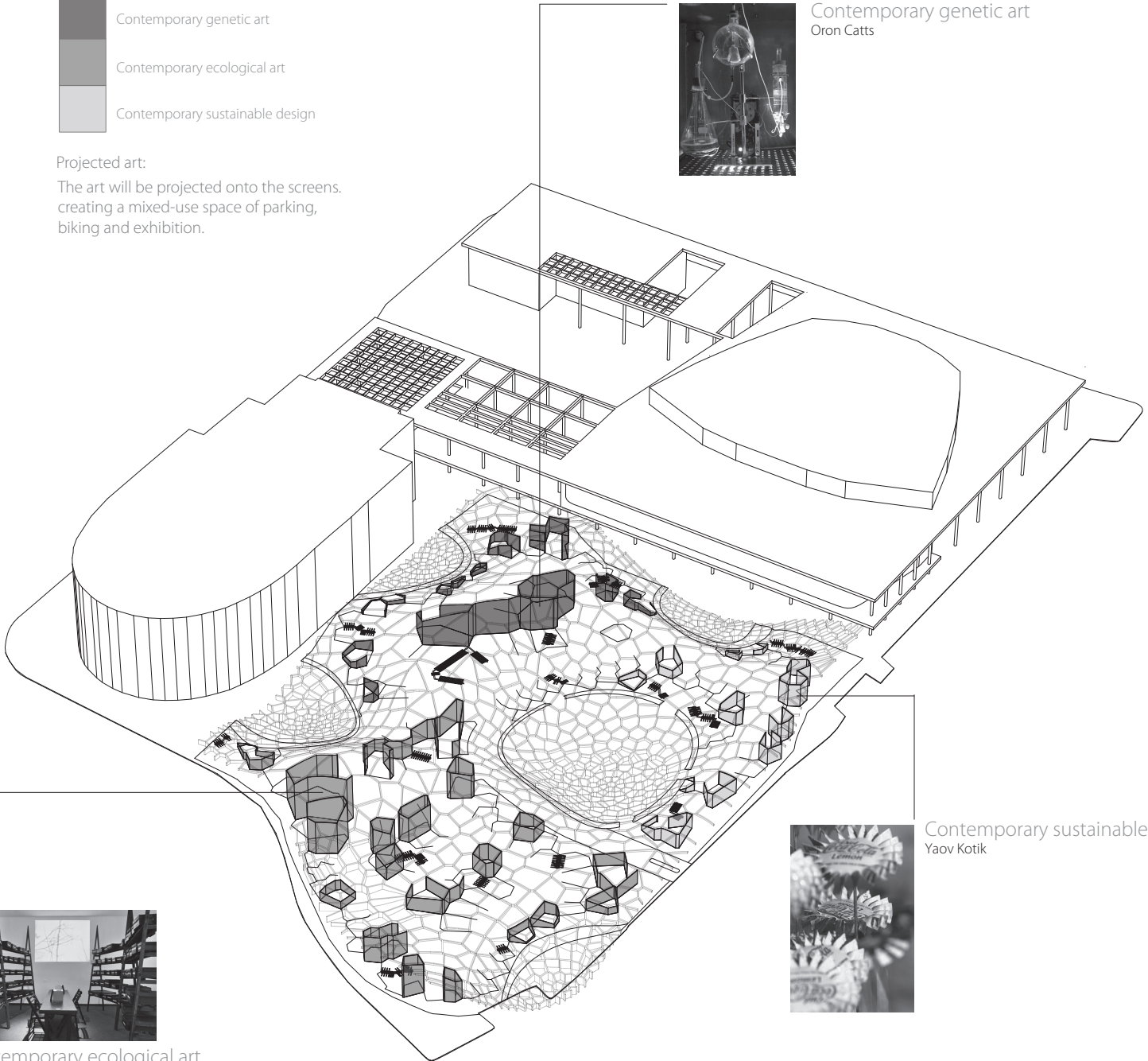
Contemporary sustainable design

Projected art:

The art will be projected onto the screens, creating a mixed-use space of parking, biking and exhibition.



Contemporary genetic art
Oron Catts



Contemporary ecological art
Shai Zakai



Contemporary sustainable design
Yaov Kotik

BIOLUMINESCENCE
making living things glow

LUCIFERASE GENE an enzyme present in certain luminous organisms.



ADENOSINE TRIPHOSPHATE (ATP) a nucleotide involved in energy metabolism and required for RNA synthesis; it occurs in all cells.

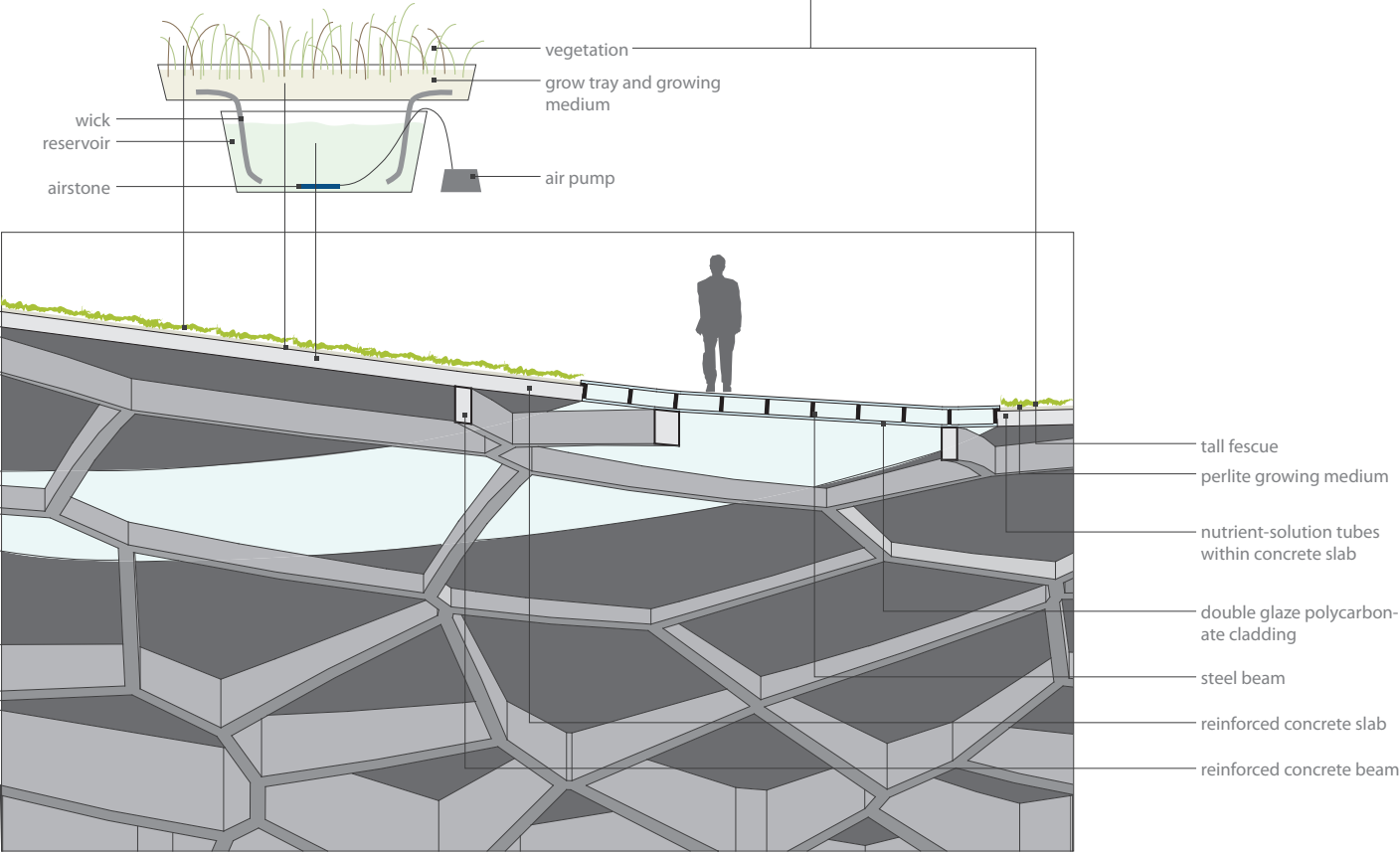


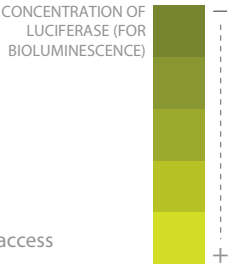
firefly

genetically-modified plant

HYDROPONICS

feeding plants only what is necessary

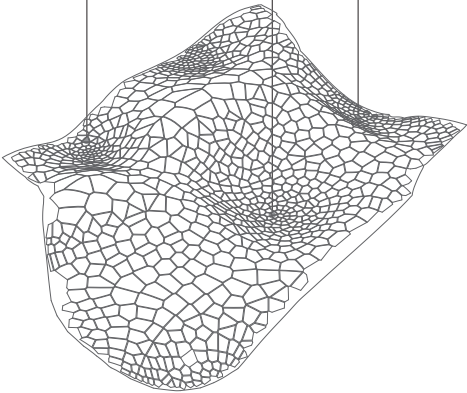




roof top point of access

gathering + observation

promenade



SCULPTURE GARDEN

Israeli artists on display

"INSPIRED-BY-NATURE" EXHIBITION

Ayala Serfaty

Furniture collection inspired by underwater plants and creatures.



Sonia Gurfein

"Small Public Sculpture" collection references the lightness of flight while celebrating life.



"SECOND LIFE" EXHIBITION

Ami Drach + Dov Ganchrow

"Bin seat" collection. Seating made from recycling bins.



Reddish Studio

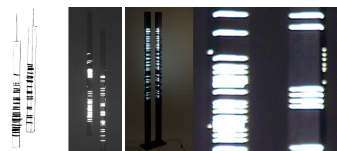
"Ready-made Bath Chair" collection made from old bath tubs.

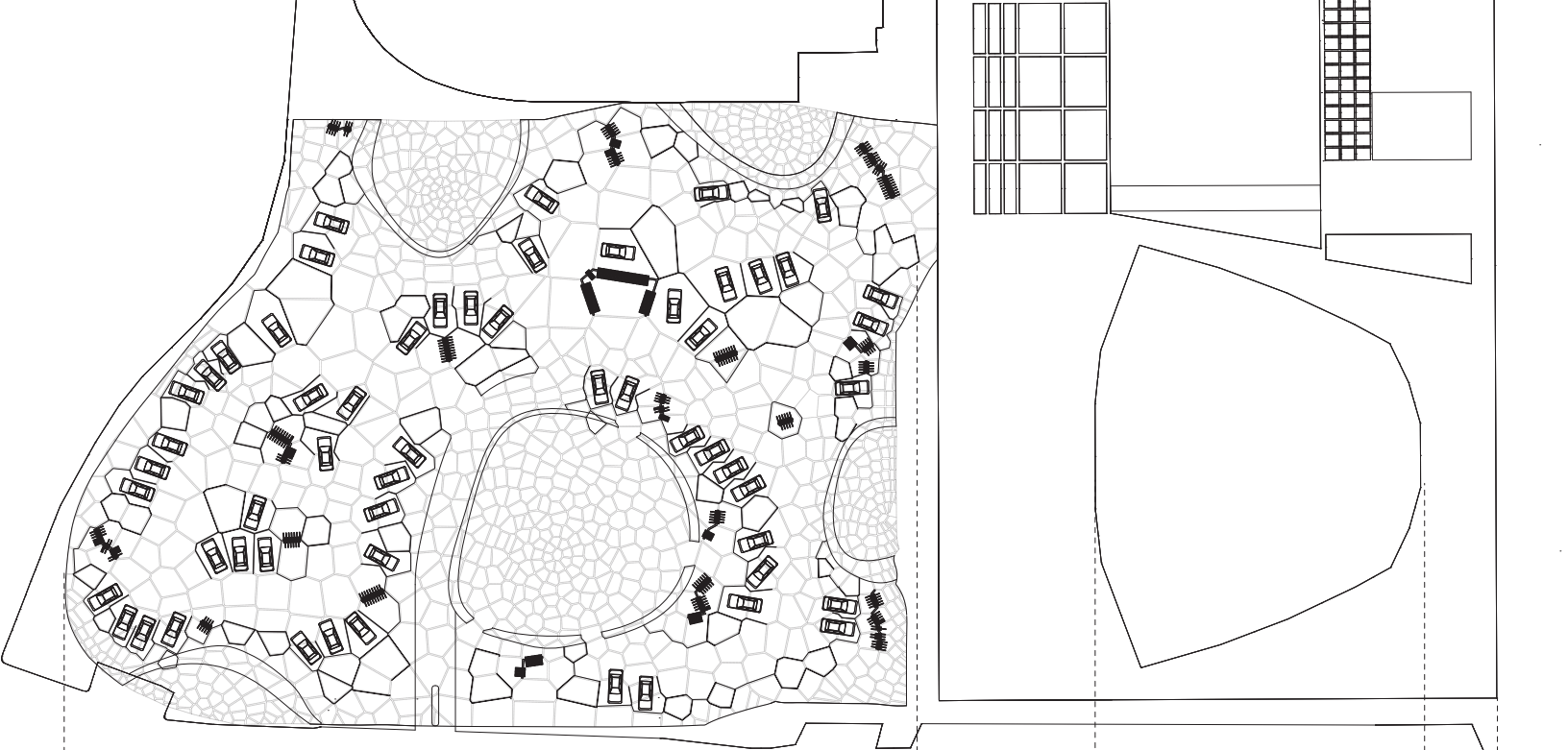


LIGHTING

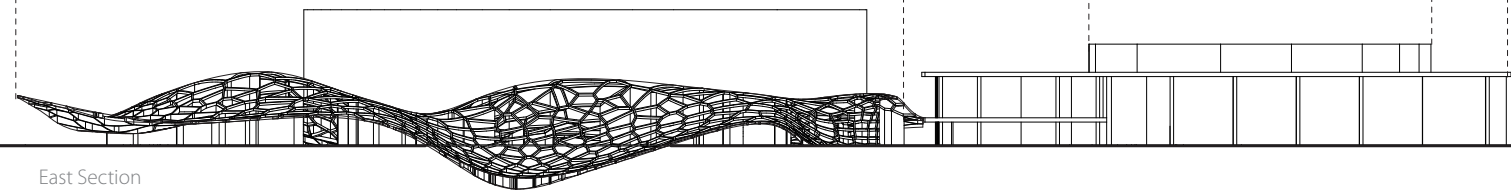
Ezri Tarazi

"Twins" lighting collection inspired by DNA genetic codes.

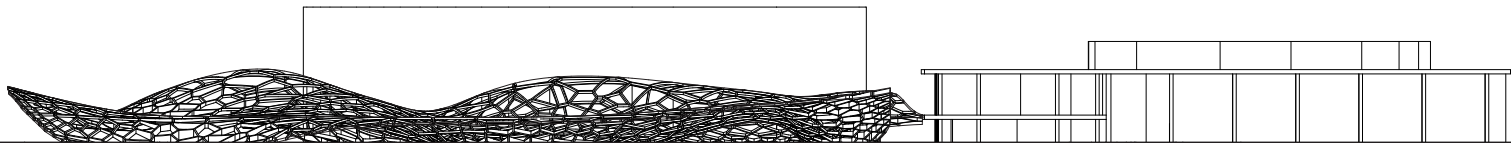


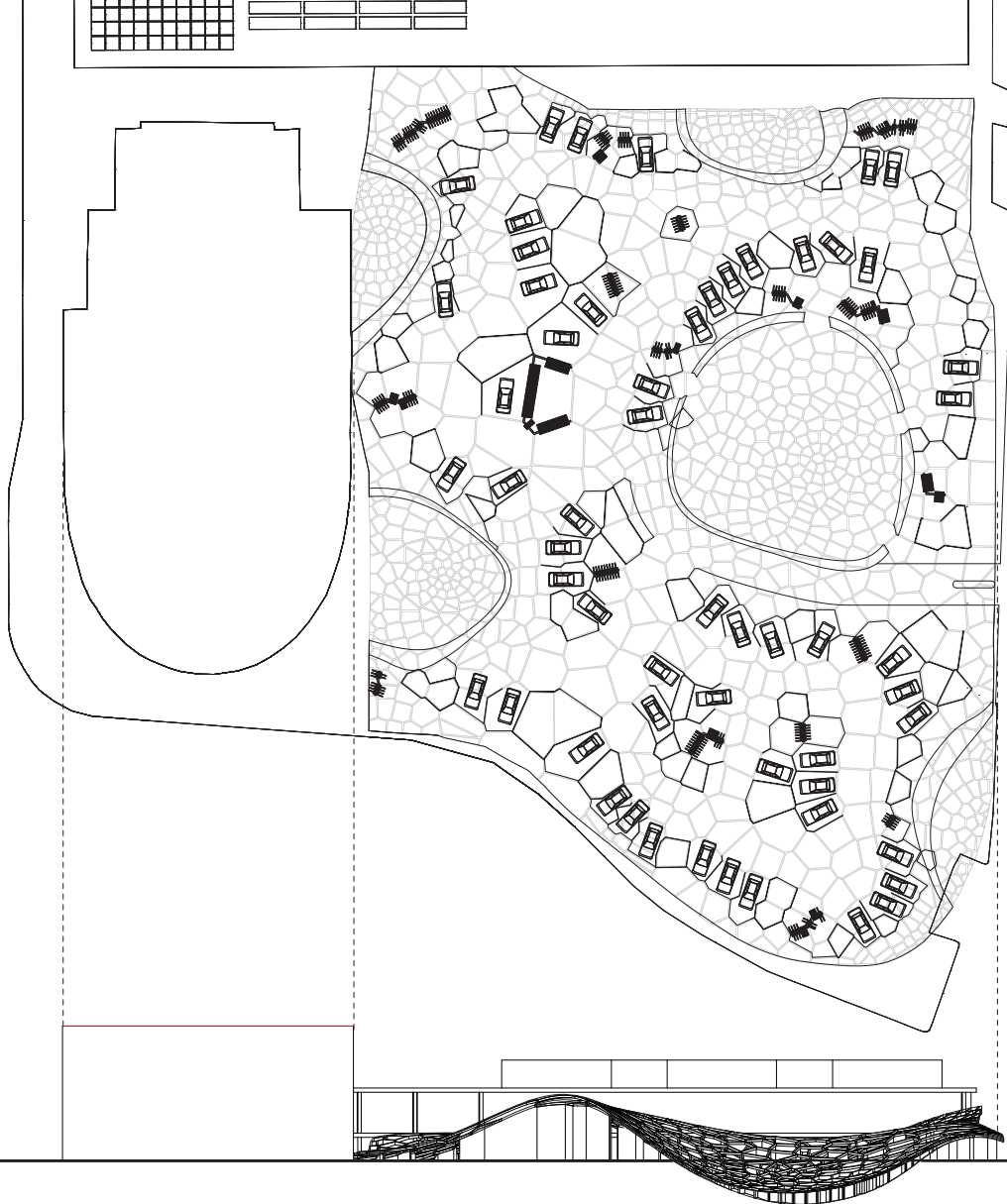


East Section

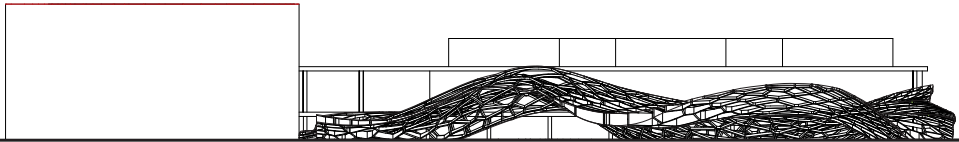


East Elevation





North Section



North Elevation