

Textile Habile

Team: Ellen Bleiwas, Evelyne Bouchard, Jessica Thatcher

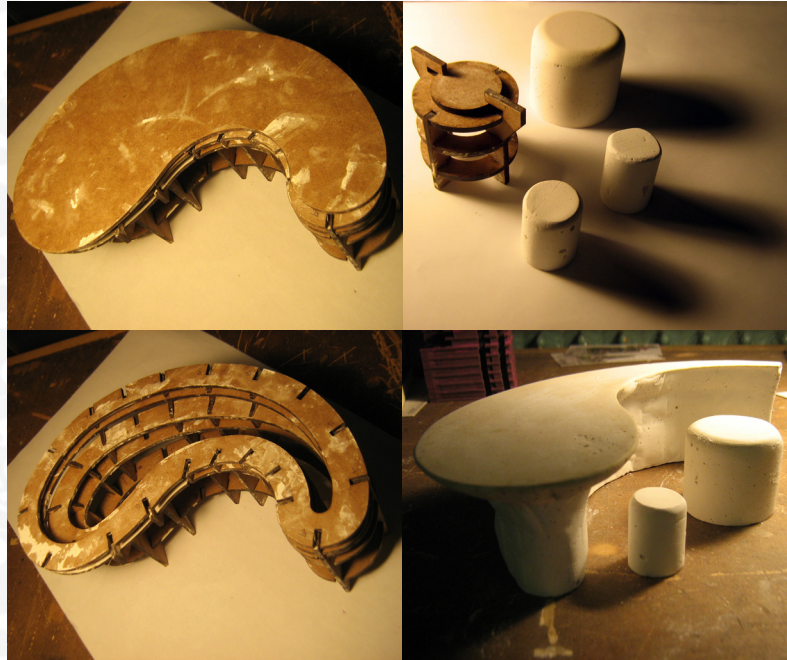
Institution: McGill University
Course: Advanced Construction
Professor: Richard Klopp



Textile Habile plays with pattern to facilitate the enjoyment of food, friends and fun in a narrow nook of a school play yard. In this proposal, a paisley pattern spreads across its grassy site and stretches vertically to become tables and chairs.

The notion of using pattern to enliven the site is a natural extension of the patterns that recently rejuvenated the surrounding playscape. Numerous options were considered. Ultimately, a pattern was chosen that lends itself to creating a landscape, to being adapted into tables and chairs, and that has a playful nature. The selected pattern was worked with at varying scales until it was both suitable to the site and to the scale of its children and adult users.

This pattern was then abstracted into three surfaces at heights corresponding to tables and chairs, and laid across the site in response to its context to facilitate activities such as meeting, eating and playing. The pattern was then repeated at a smaller scale in greater detail as a surface texture on the tops of the two higher surfaces.



Formwork and Plaster Models

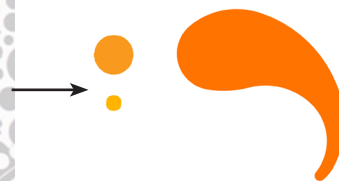


Original Pattern

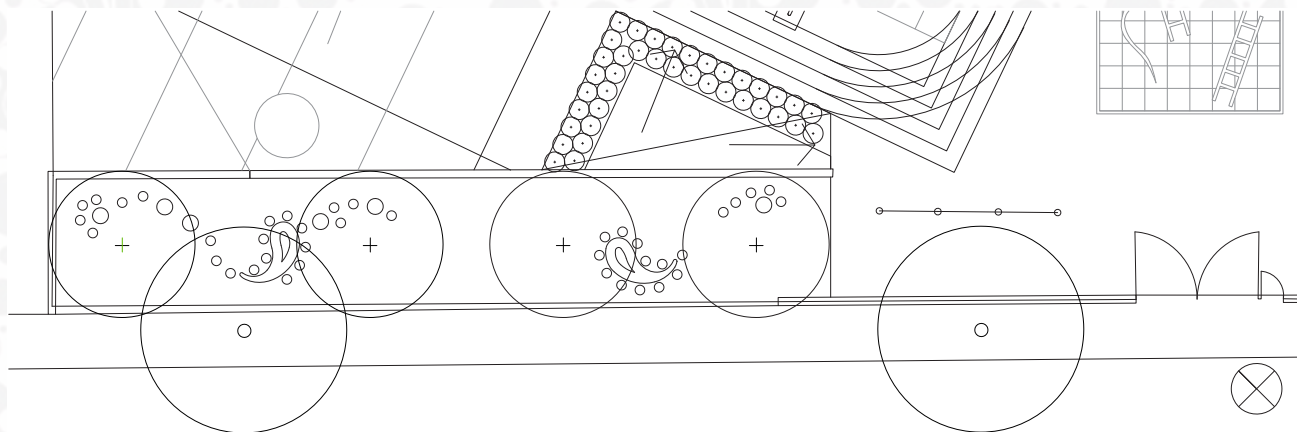


Pattern
Translated into
Surfaces

- 600mm High Surface
- 500mm High Surface
- 370mm High Surface



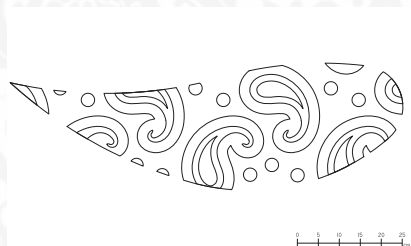
Intricate Pattern,
3 Simple
Components



Plan



3 Components - Plan



Surface Texture - Plan



Surface Texture - Model