



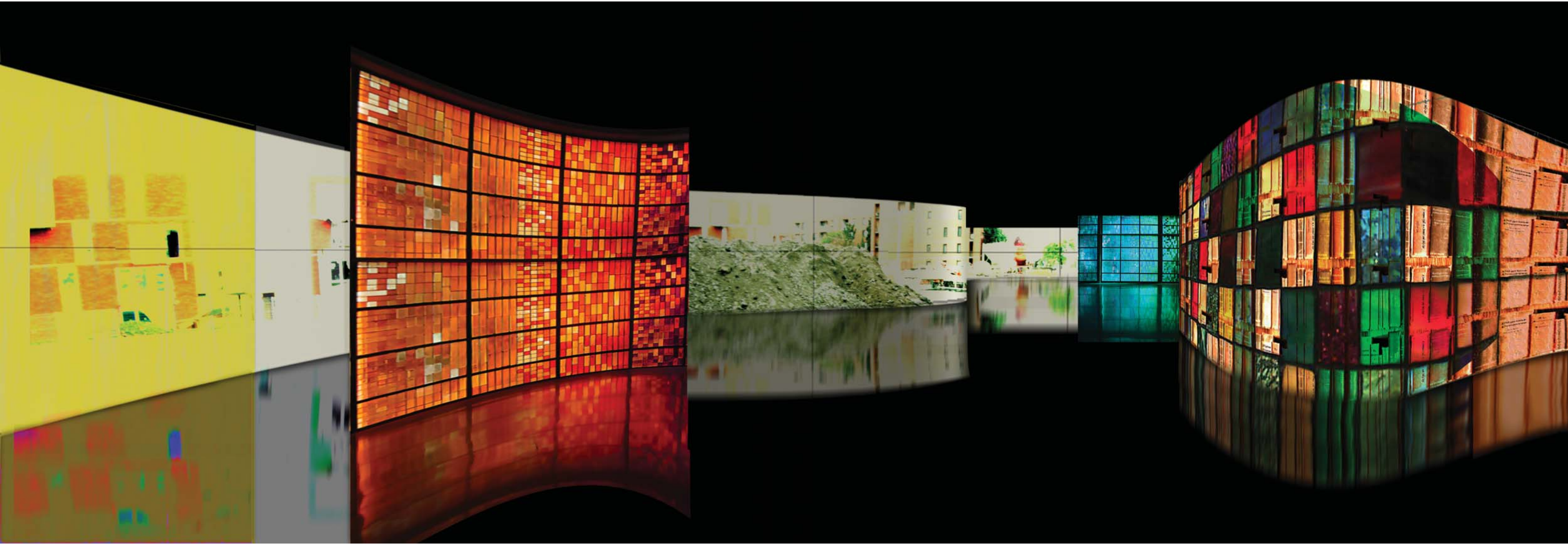
BIBLIOTHEQUE Marc-Favreau

Shadow is used as a metaphor for the books and the concept for the library. The knowledge that one obtains from reading has a shadowy existence, in which is permanent, and part of someone but hidden. Thus the library as the container for books emerges as a shadow box.

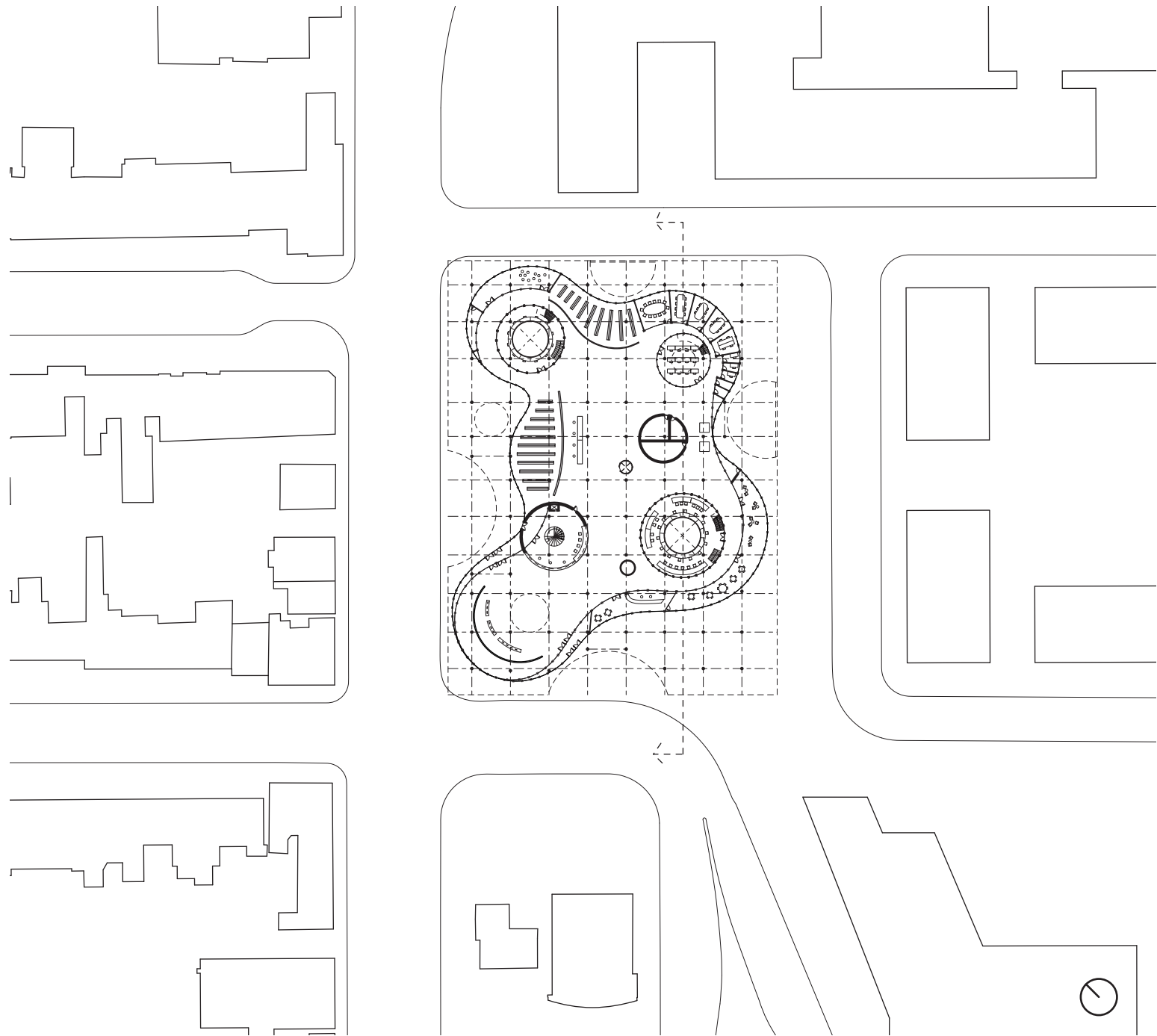
The experience prescribed inside the space between the shadows is dark with a pensive and serene atmosphere. It is organized around series of curtain walls with different porosity. The outer wall is transparent glass, whereas the second inner layer of wall is translucent glass that is more opaque and blocks most of the light and view to the outside. The space in between the exterior wall and the second layer glass is a bright space for work rooms and stack area organized around the circumference of these walls. Semi-enclosed inside the boundary of the interior wall is left with the dark space which is contrasted by the pools of light coming from the light shafts inside the space. Each light shaft is programmed with different function, such as adult, teenager, children, service, and staff. People will spend most of their time inside the shaft where a giant skylight is located at the center of each shaft to allow light penetrate through. The light shaft is multiple leveled and brighter as one moves upstairs. At the top of the light shaft is a relaxing space where one is bathed in natural sunlight.



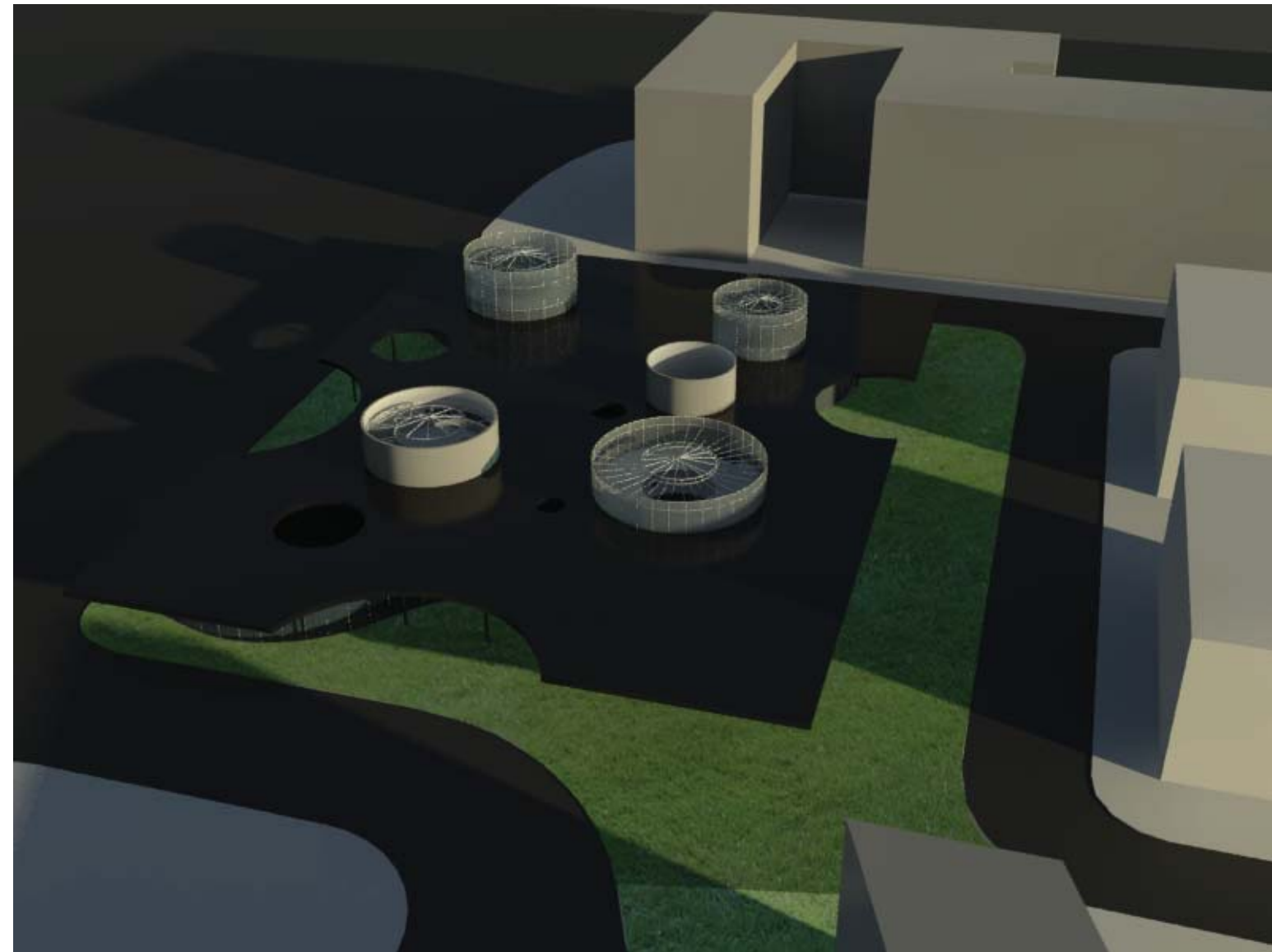
SCHEMATIC VIEW OF EXTERIOR



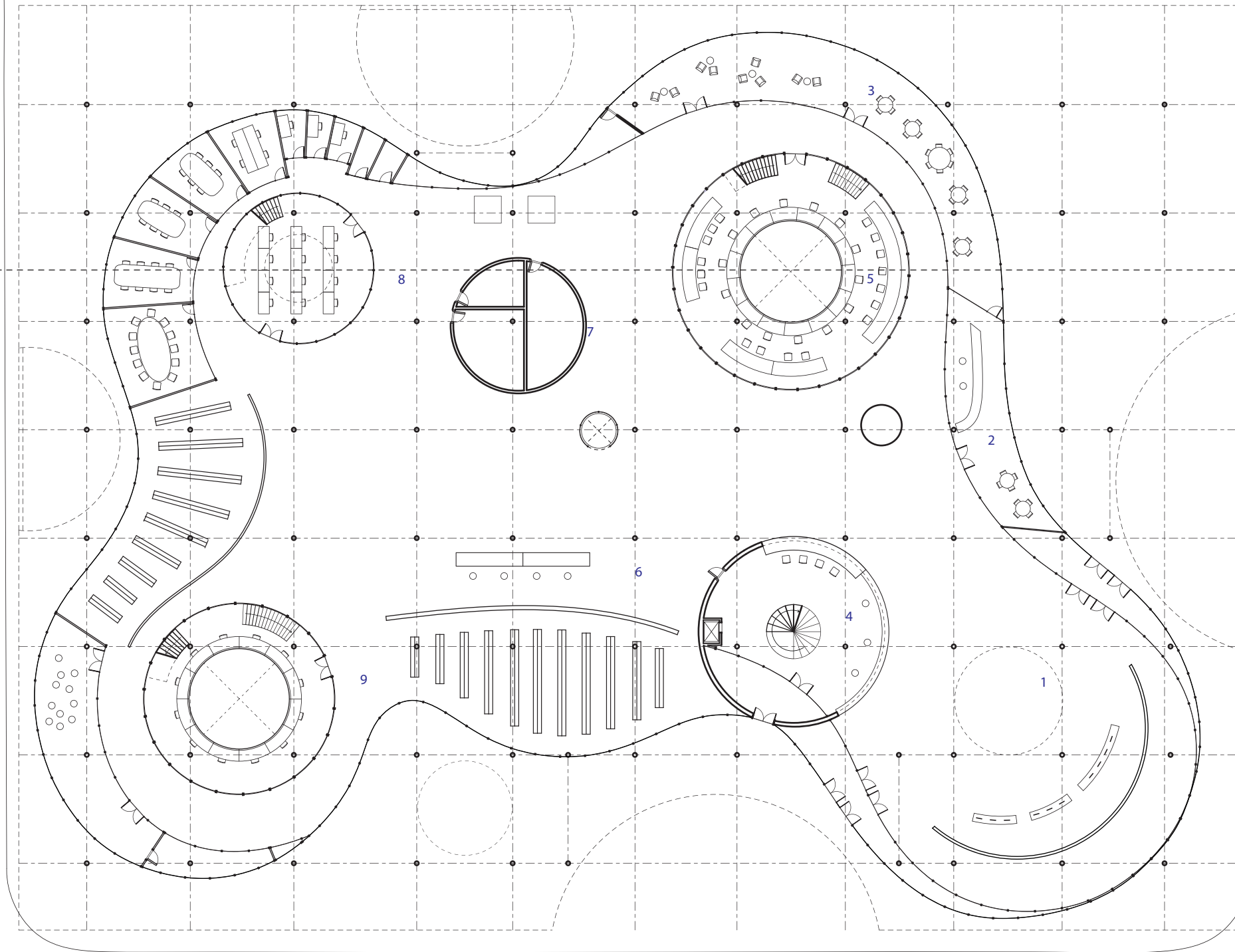
SCHEMATIC VIEW OF INTERIOR



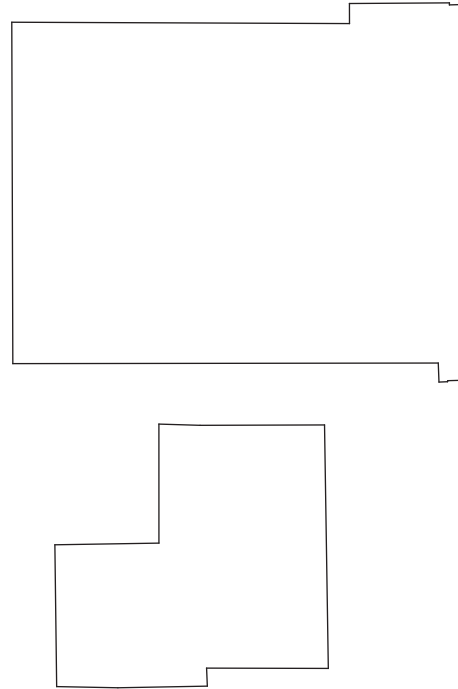
SITE PLAN



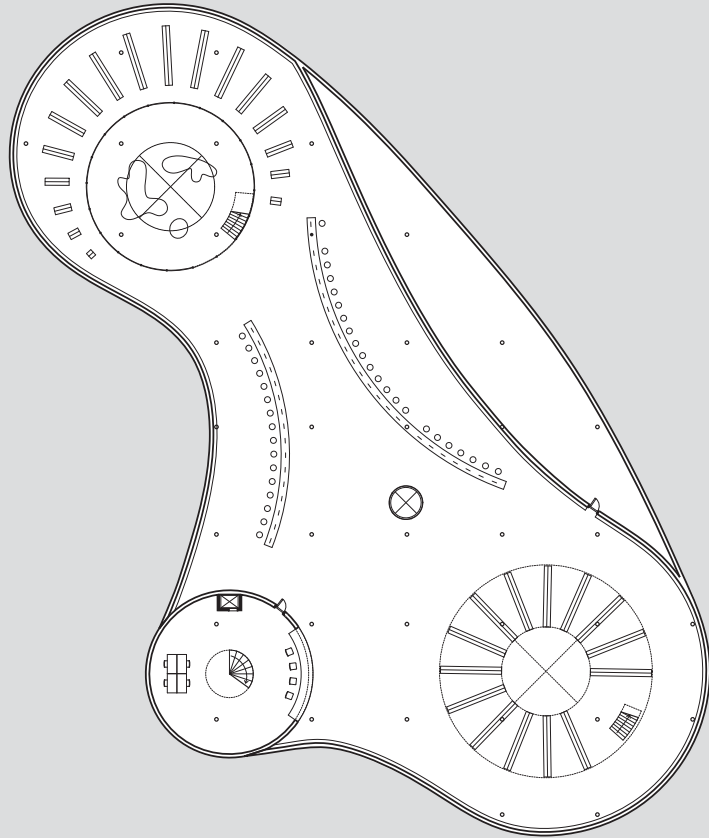
AERIAL VIEW



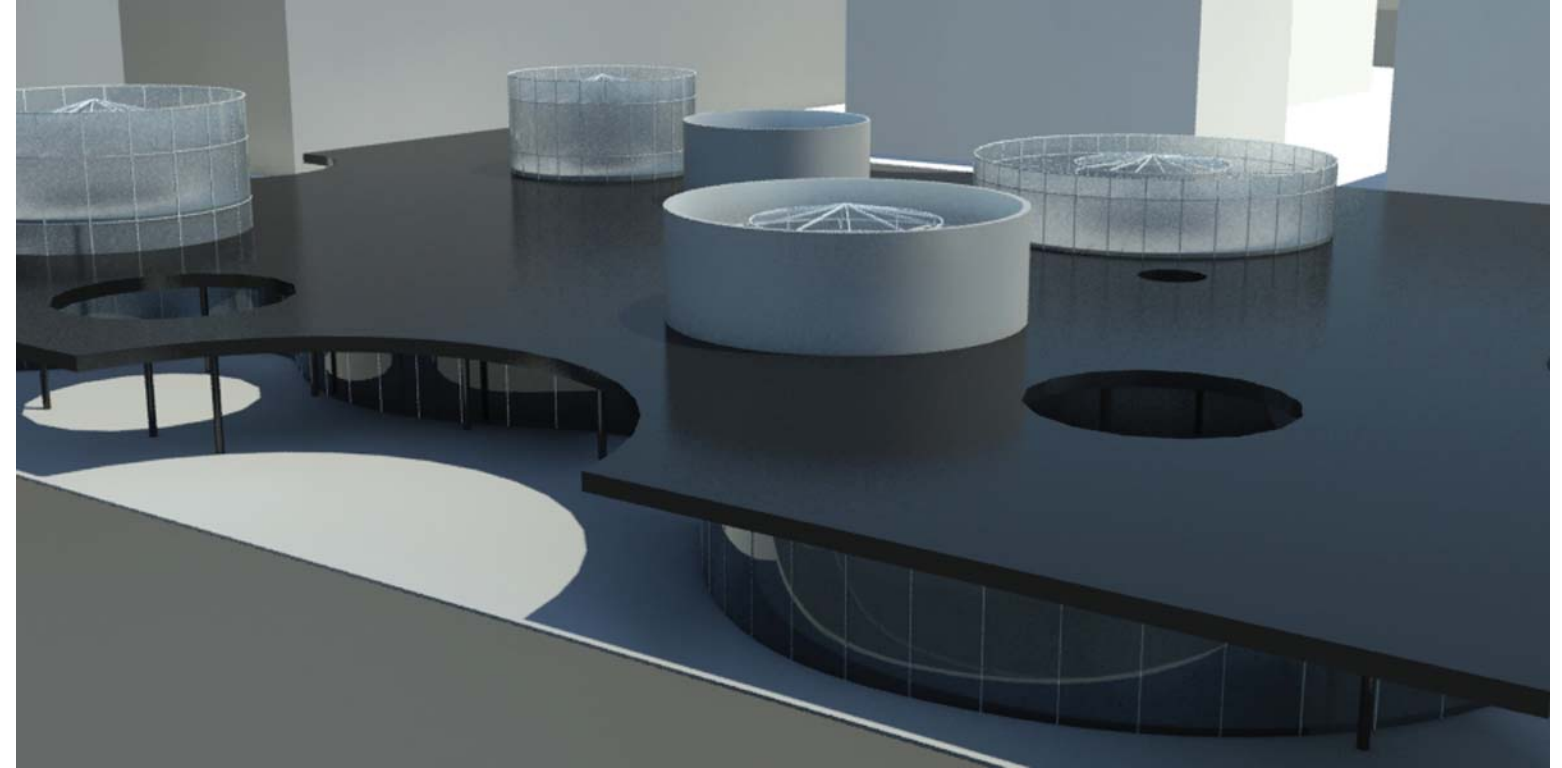
- 1 public display area
- 2 cafe
- 3 terrace
- 4 staff circulation desk
- 5 children
- 6 reference
- 7 washroom
- 8 teenager
- 9 adult



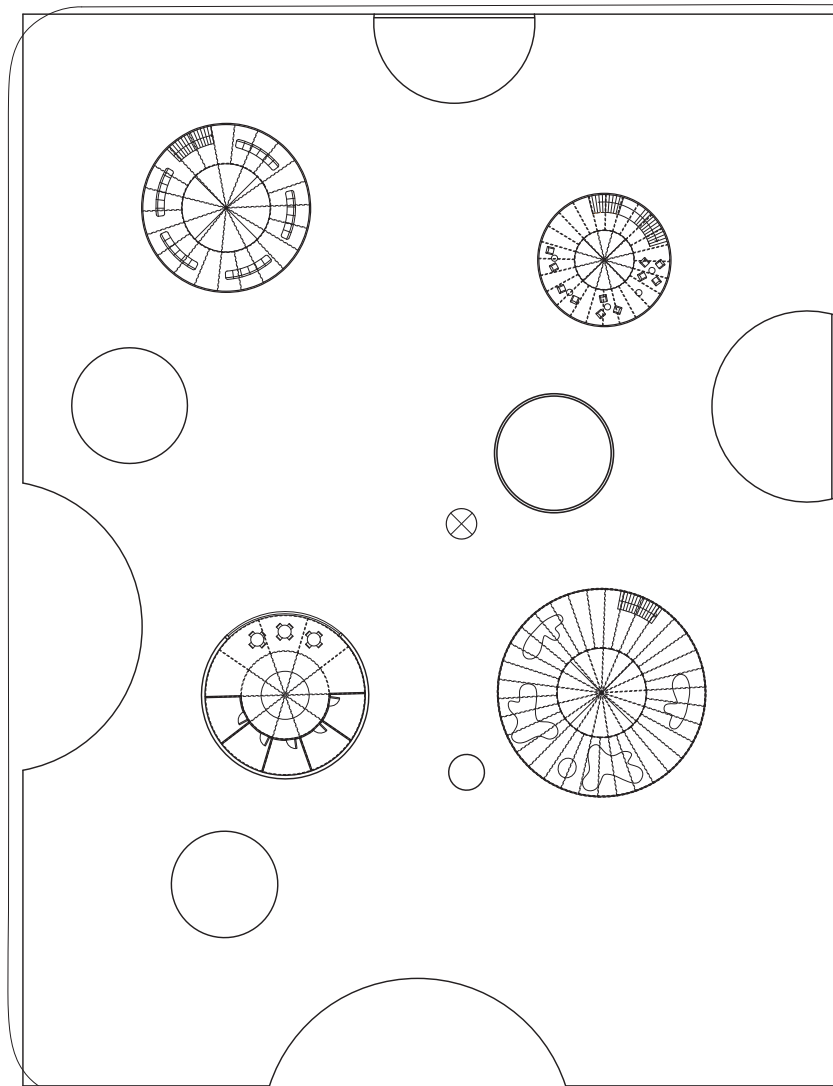
GROUND FLOOR PLAN



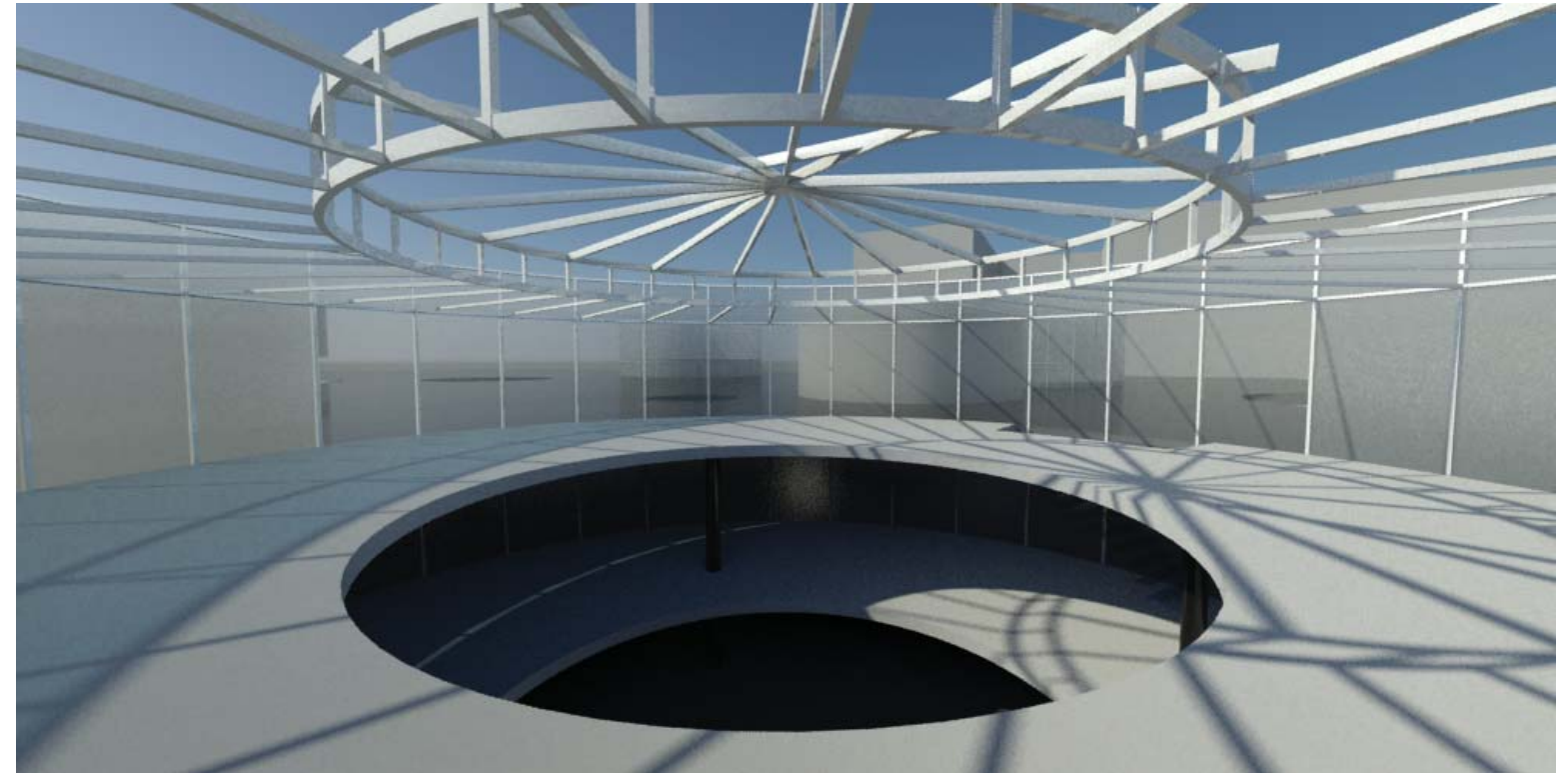
BASEMENT PLAN
1:200



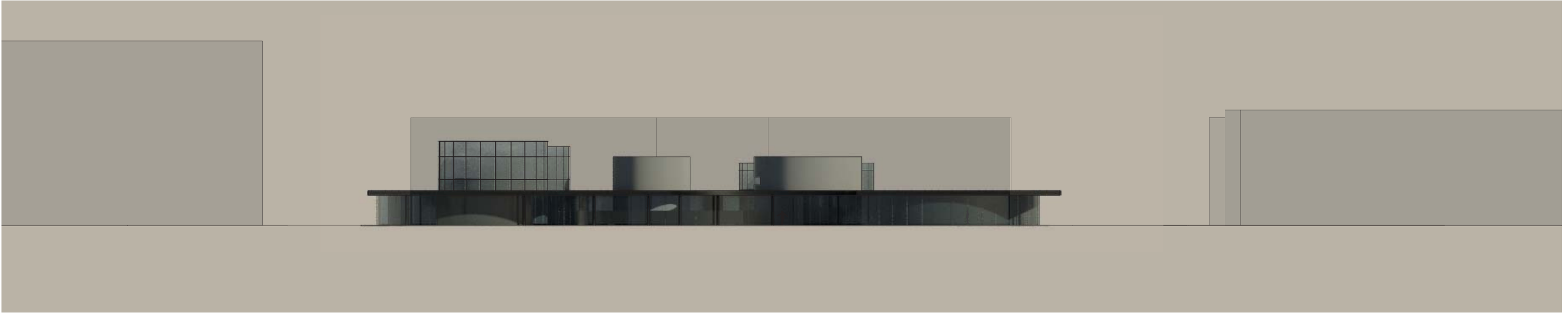
VIEW OF EXTERIOR



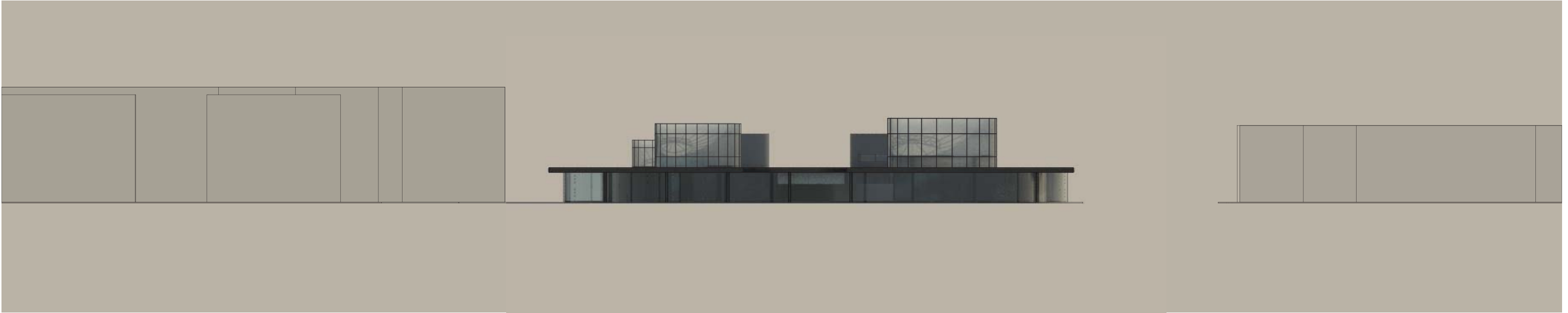
ROOF PLAN
1:200



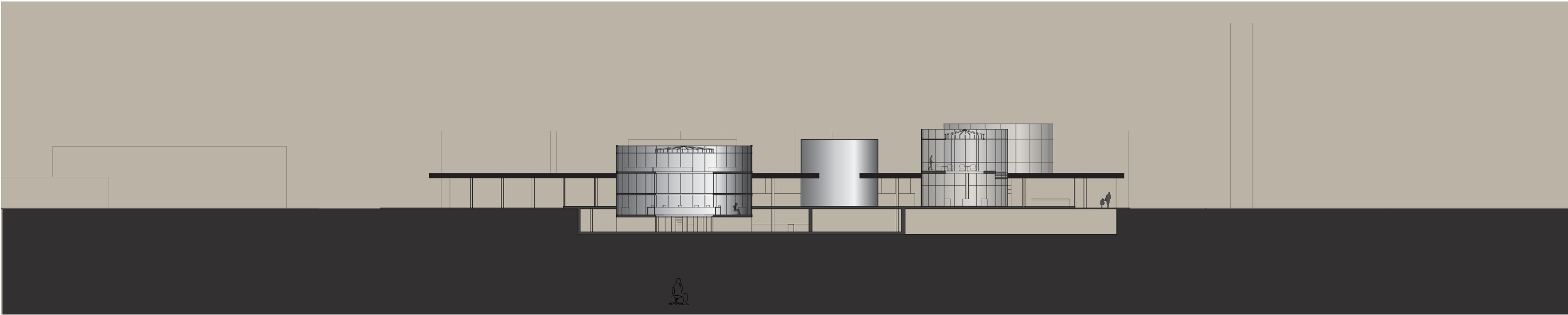
VIEW OF ROOF



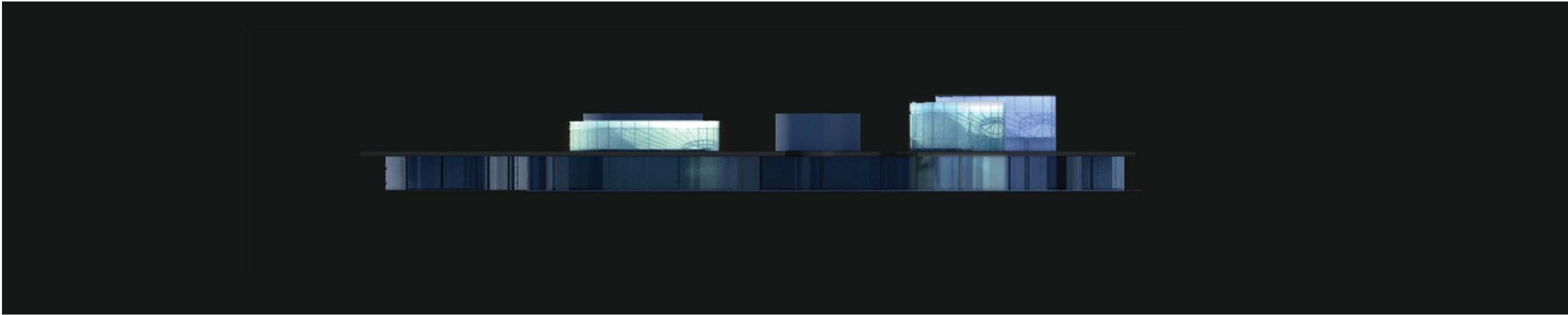
SOUTHEAST ELEVATION
1:200



SOUTHWEST ELEVATION
1:200



SECTION
1:200



NORTHWEST ELEVATION
1:200